



MAY WALKER, CONSTABLE
PRECINCT SEVEN
HARRIS COUNTY, TEXAS

MAIN OFFICE
5300 Griggs Road
Houston, Texas 77021
PHONE (713) 643-6602
FAX (713) 643-3401

Date: 12/01/2016

From: Lieutenant Holland D. Jones, *MA, JD, PhD.*
Toll Road Division Supervisor & Departmental Training Coordinator
Harris County Constable's Office of Precinct "7"

To: Midtown Management District
Public Safety Committee & Midtown Board of Directors

Subject: November Midtown Monthly Report
Enclosure: **Neighborhood Contract Performance Report**
Distribution: Public Safety Committee & Midtown Board of Directors

The purpose of this "**Contract Performance Report**" is to provide the Board of Directors with a detailed report of the services provided by the Harris County Constable's Office of Precinct Seven for the **performance of month of November 2016**. With regard to the specific contents of the report, there are 16 distinctive component parts of this report. These components are enumerated below:

- | | |
|--|---|
| 01. Patrol Activity Details | 10. Traffic Enforcement Report |
| 02. Patrol Activity Analytical Summary | 11. Trends & Percentages of Traffic |
| 03. Patrol Activity Percentages & Trends | 12. Citation & Warning Issuance Review |
| 04. Security Checks Report | 13. Call for Service Report (<i>C.F.S.</i>) |
| 05. Security Checks Percentages & Trends | 14. Trends & Percentages for <i>C.F.S.</i> |
| 06. Crisis Intervention Disposition Report | 15. Overtime Report (service at no Cost) |
| 07. Offense/Incident Generation Report | 16. Reserve Deputy Use (at no Cost) |
| 08. Criminal Arrest Types Report | 17. Incident Summarization |
| 09. Warrant Execution Report | 18. Hotspot Report Data Review |

Each component is calculated separately to achieve the category totals. A cursory analysis of the statistical data from this report should be demonstrative of the quality of performance of this agency in realizing the contractual obligations to achieve the overall goals and objectives of this Agency and the Midtown.

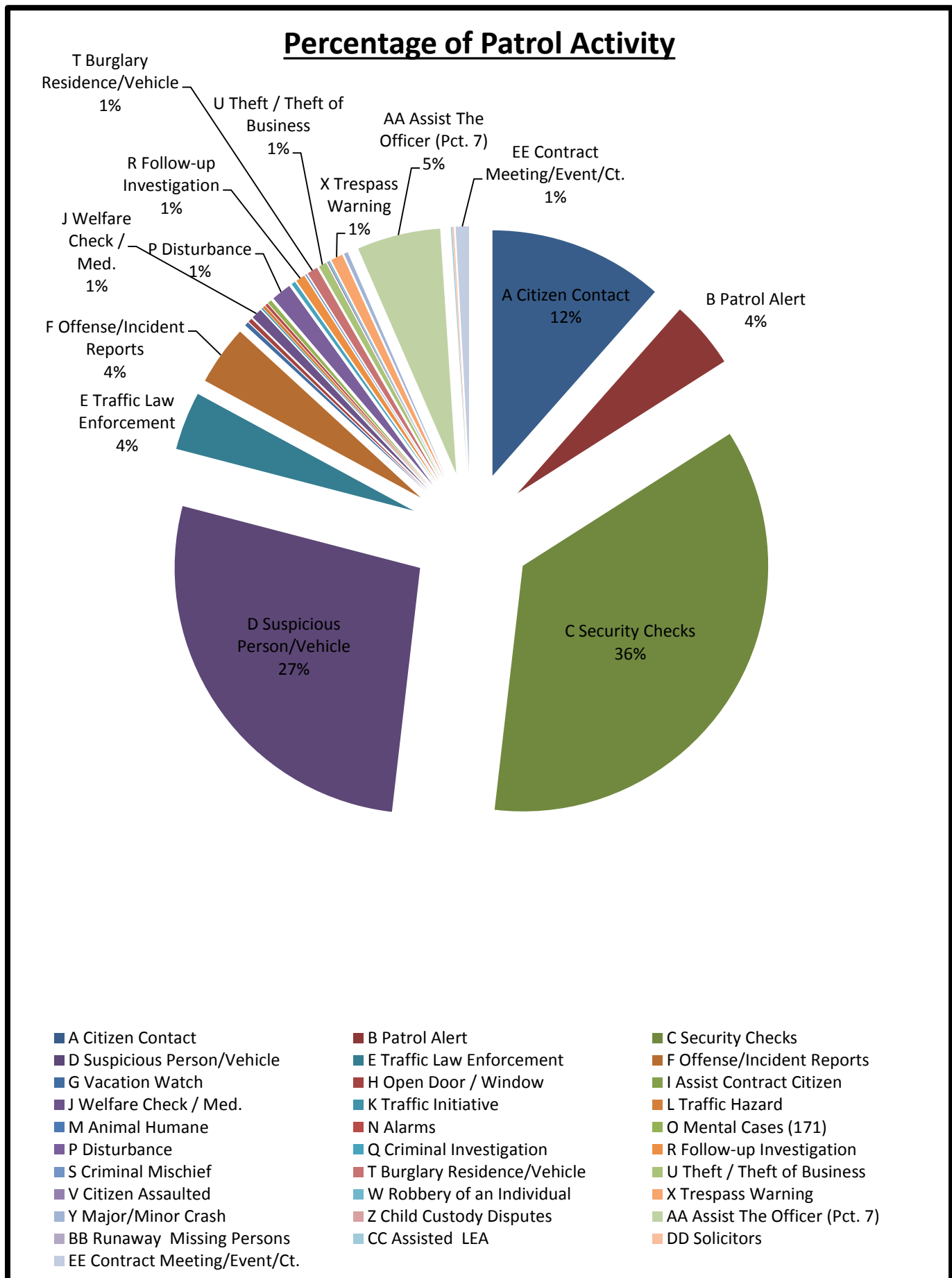
In addition, this report will encompass an incident summary category which will provide a brief synopsis of any significant incidents that have occurred during the evaluation month. The information accumulated will be utilized to identify spatial concentrations of significant incidents or offenses that required the generation of a police report by Midtown Law Enforcement Personnel.

A. Patrol Activity Monthly Total:

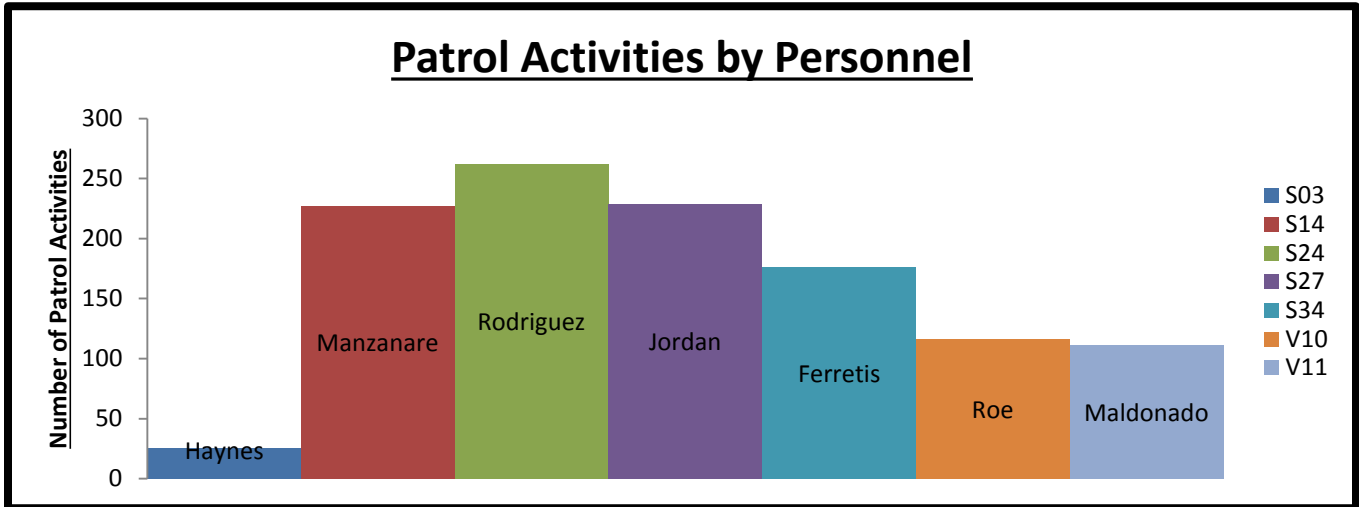
1146

*	<i>Patrol Activity Types</i>	S03	S14	S24	S27	S34	V10	V11	TOT
A	Citizen Contact	3	11	70	22	8	9	9	132
B	Patrol Alert	3	9	2	27	10	0	0	51
C	Security Checks	5	81	103	38	108	39	37	411
D	Suspicious Person/Vehicle	2	83	27	87	9	53	51	312
E	Traffic Law Enforcement	0	9	6	2	23	2	2	44
F	Offense/Incident Reports	0	14	12	7	4	5	3	45
G	Vacation Watch	0	0	0	3	0	0	0	3
H	Open Door / Window	0	0	0	0	1	1	1	3
I	Assist Contract Citizen	0	0	0	0	0	0	0	0
J	Welfare Check / Med.	0	4	3	1	0	0	0	8
K	Traffic Initiative	1	0	0	0	0	0	0	1
L	Traffic Hazard	0	1	1	0	0	0	0	2
M	Animal Humane	0	0	0	0	0	0	0	0
N	Alarms	0	0	0	1	1	0	0	2
O	Mental Cases (171)	0	1	1	0	0	1	0	3
P	Disturbance	0	2	5	7	1	0	0	15
Q	Criminal Investigation	0	1	0	2	0	0	0	3
R	Follow-up Investigation	1	2	2	2	0	0	0	7
S	Criminal Mischief	0	0	0	1	0	0	0	1
T	Burglary Residence/Vehicle	0	1	4	0	1	1	1	8
U	Theft / Theft of Business	0	0	3	1	2	0	0	6
V	Citizen Assaulted	0	1	0	0	0	0	0	1
W	Robbery of an Individual	0	0	0	1	0	0	0	1
X	Trespass Warning	0	1	0	8	0	0	0	9
Y	Major/Minor Crash	0	3	0	0	0	0	0	3
Z	Child Custody Disputes	0	0	0	0	0	0	0	0
AA	Assist The Officer (Pct. 7)	5	3	21	16	8	4	6	63
BB	Runaway Missing Persons	0	0	0	0	0	0	0	0
CC	Assisted LEA	0	0	0	1	0	0	0	1
DD	Solicitors	0	0	1	0	0	0	0	1
EE	Contract Meeting/Event/Ct.	5	0	1	2	0	1	1	10
*	<i>MONTH TOTALS</i>	25	227	262	229	176	116	111	1146

A1. Patrol Activity Percentage:



A2. Patrol Activity by Midtown Personnel:

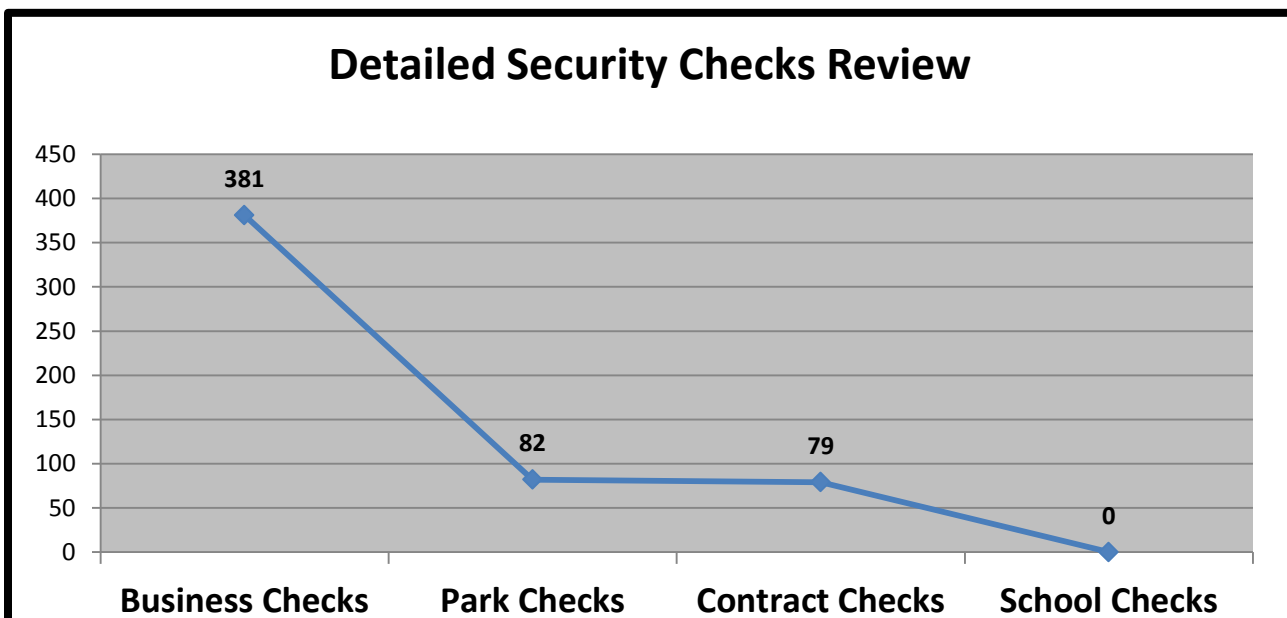


B. Security Checks Monthly Total:

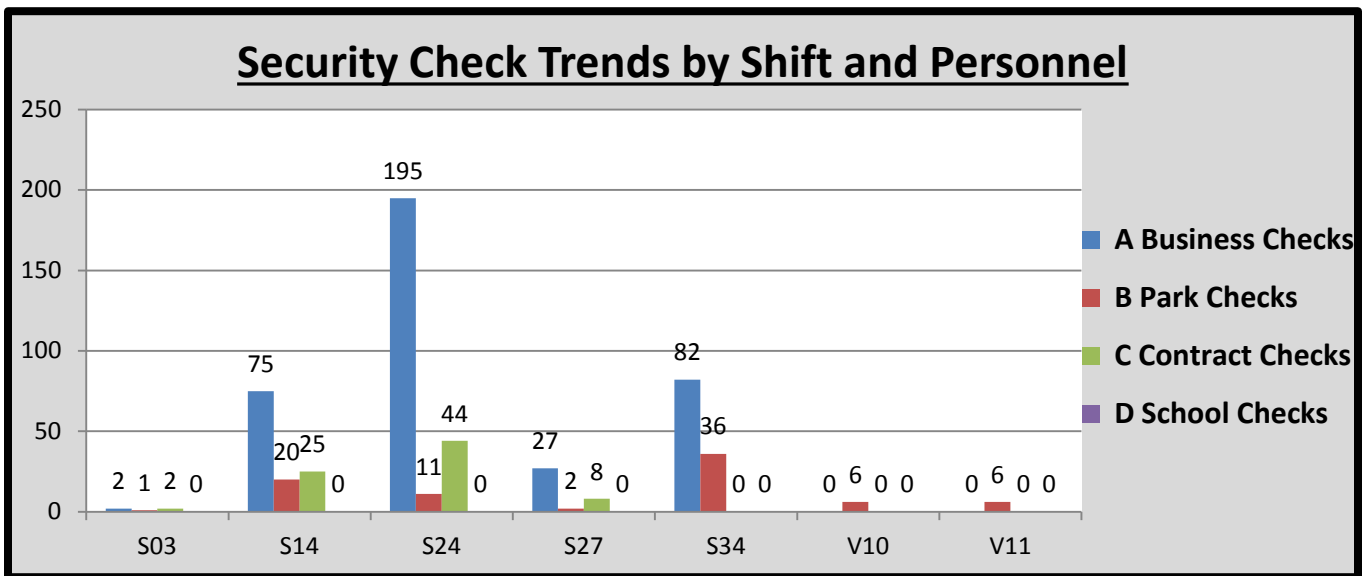
542

* Security Checks	S03	S14	S24	S27	S34	V10	V11	TOT
A Business Checks	2	75	195	27	82	0	0	381
B Park Checks	1	20	11	2	36	6	6	82
C Contract Checks	2	25	44	8	0	0	0	79
D School Checks	0	0	0	0	0	0	0	0
E Totals	5	120	250	37	118	6	6	542

B1. Detailed Security Checks Review:



B2. Security Check Trends:



C. CIT/MHO Dispositions Monthly Total:

002

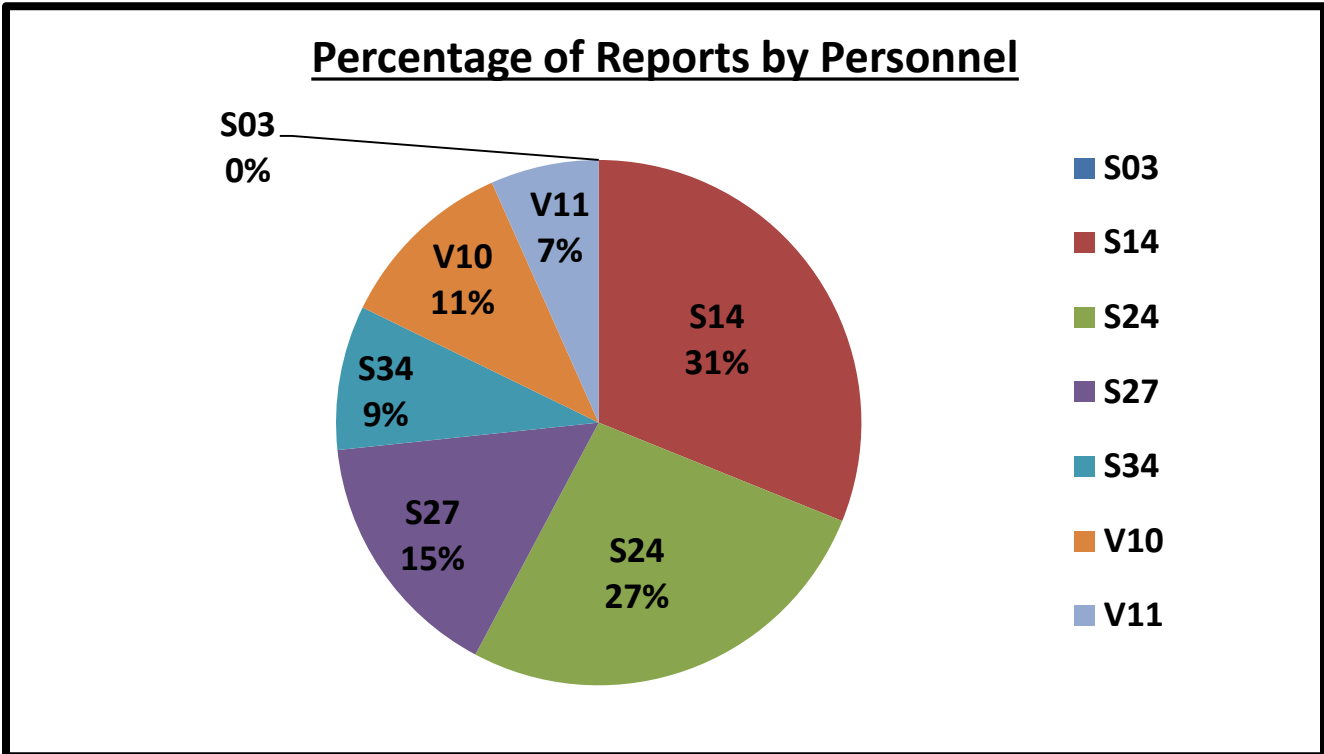
*	<i>C.I.T. Dispositions</i>	S03	S14	S24	S27	S34	V10	V11	TOT
A	CIT/MHO Outside Referral	0	0	0	0	0	0	0	0
B	CIT/MHO Transport	0	0	1	0	0	0	0	1
C	CIT/MHO CIT Contact	0	1	0	0	0	0	0	1
D	CIT/MHO Arrest	0	0	0	0	0	0	0	0
E	<i>Totals</i>	0	1	1	0	0	0	0	2

D. Offense/Incident Reports Monthly Total:

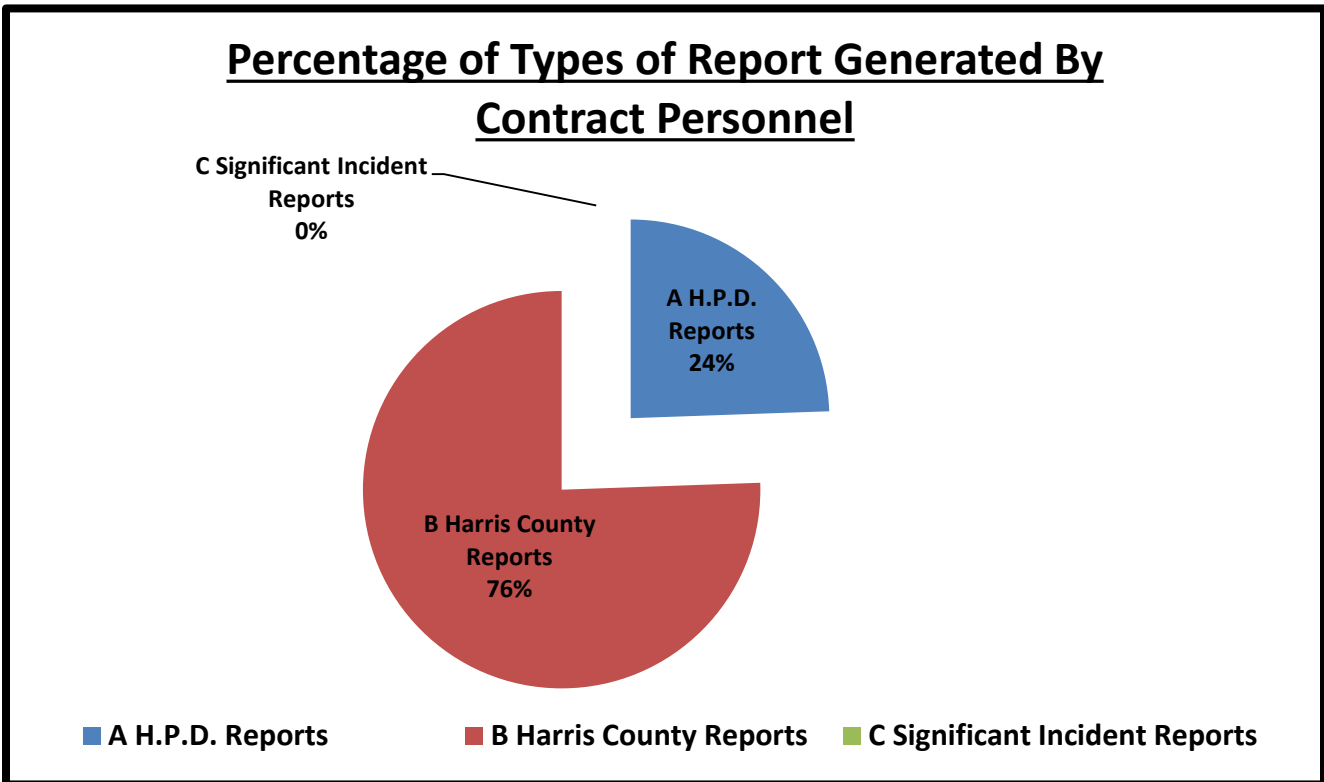
045

*	<i>Offense/Incident Reports</i>	S03	S14	S24	S27	S34	V10	V11	TOT
A	H.P.D. Reports	0	0	5	3	2	0	1	11
B	Harris County Reports	0	14	7	4	2	5	2	34
C	Significant Incident Reports	0	0	0	0	0	0	0	0
D	<i>Totals</i>	0	14	12	7	4	5	3	45

D1. Report Generation Percentages:



D2. Percentages:

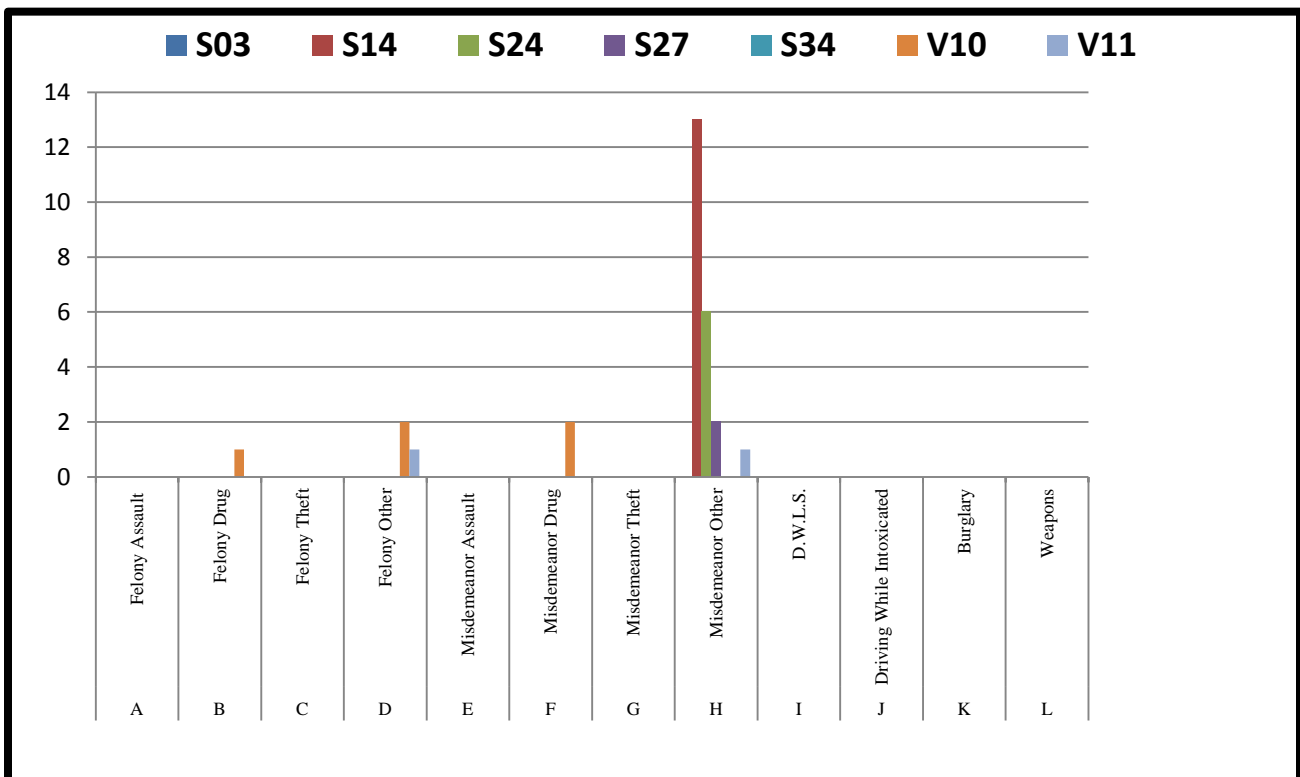


E. Types of Criminal Arrests Monthly Total:

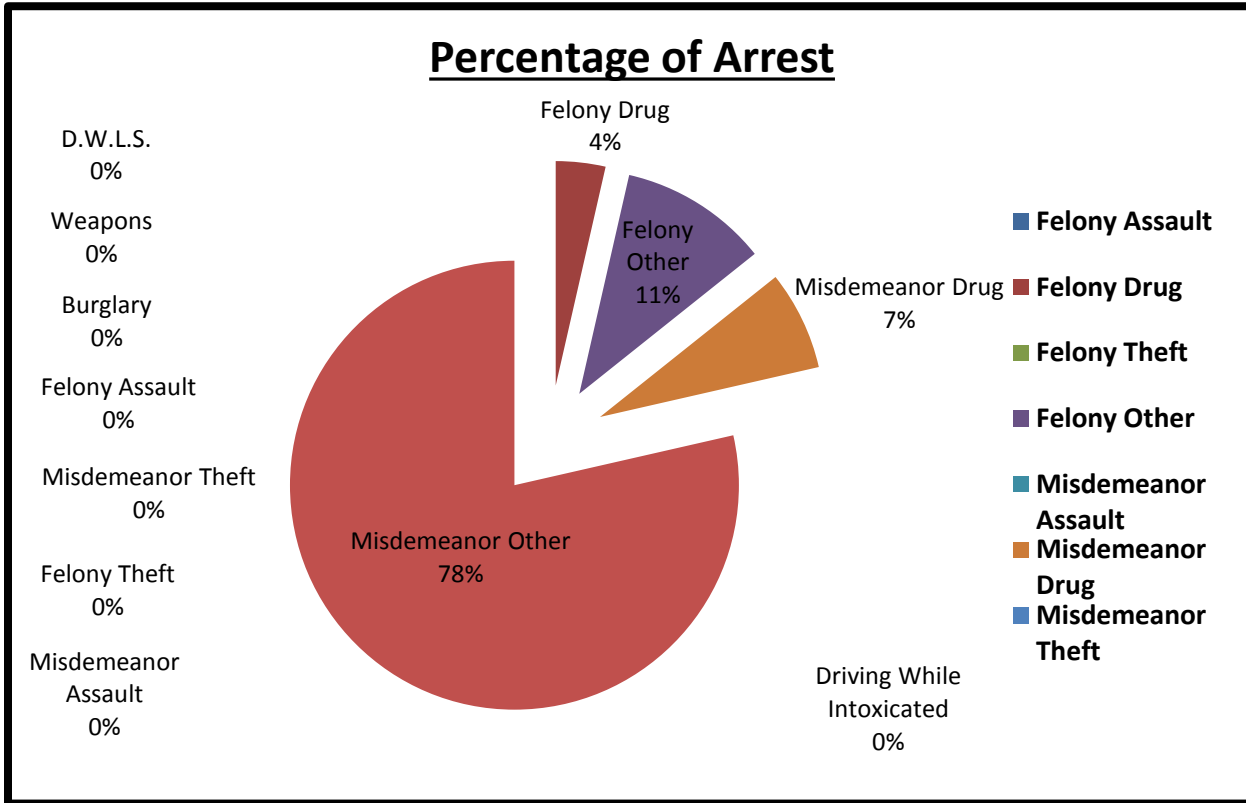
0028

* Types of Criminal Arrests	S03	S14	S24	S27	S34	V10	V11	TOT
A Felony Assault	0	0	0	0	0	0	0	0
B Felony Drug	0	0	0	0	0	1	0	1
C Felony Theft	0	0	0	0	0	0	0	0
D Felony Other	0	0	0	0	0	2	1	3
E Misdemeanor Assault	0	0	0	0	0	0	0	0
F Misdemeanor Drug	0	0	0	0	0	2	0	2
G Misdemeanor Theft	0	0	0	0	0	0	0	0
H Misdemeanor Other	0	7	2	2	0	0	0	11
I Sobriety Center	0	6	4	0	0	0	1	11
J Driving While Intoxicated	0	0	0	0	0	0	0	0
K Burglary	0	0	0	0	0	0	0	0
L Weapons	0	0	0	0	0	0	0	0
M Totals	0	13	6	2	0	5	2	28

E1. Types of Criminal Arrests Monthly Total:



E2. Percentage of Arrest:



F. Executed Warrant Monthly Total:

015

*	<i>Executed Warrants</i>	S03	S14	S24	S27	S34	V10	V11	TOT
A	Felony Warrants	0	2	0	0	0	3	1	6
B	Misdemeanor Warrants	0	4	1	1	0	3	0	9
C	Totals	0	6	1	1	0	6	1	15

G. Citations vs. Warnings Monthly Total:

024

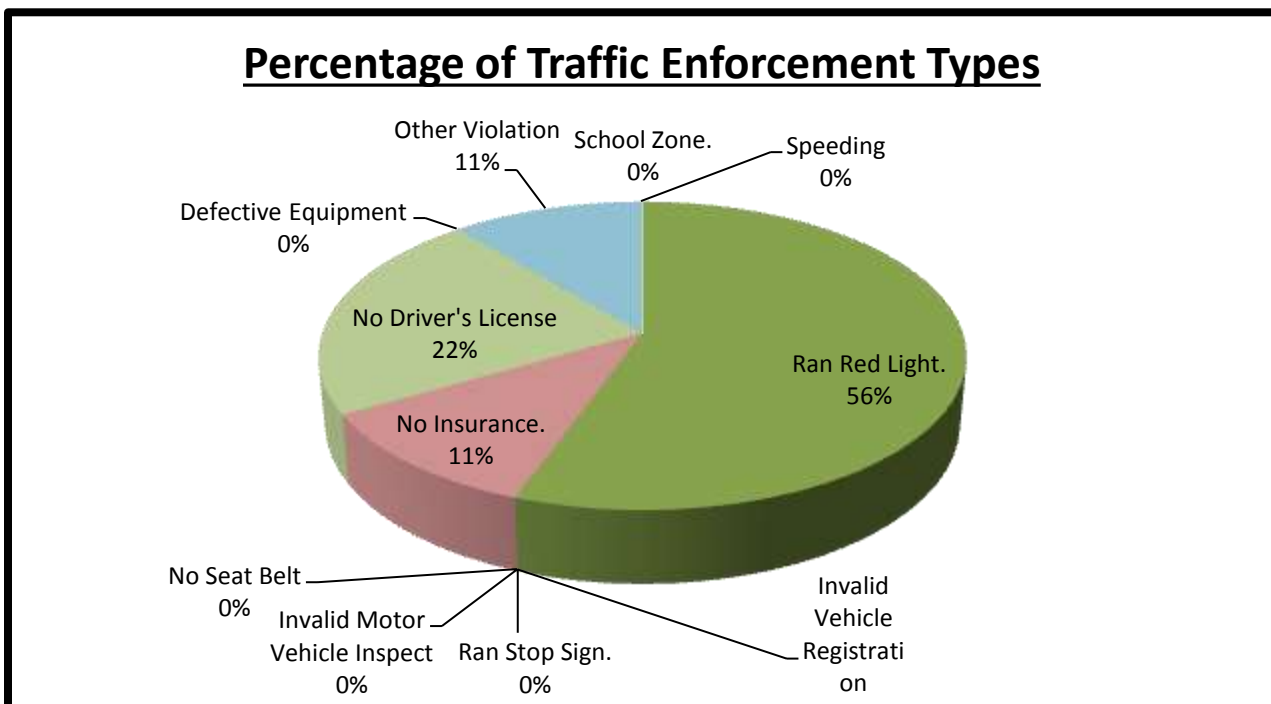
*	<i>Warnings vs. Citations</i>	S03	S14	S24	S27	S34	V10	V11	TOT
A	Written/Verbal Warnings	0	12	0	2	0	1	0	15
B	Citations	0	0	5	0	4	0	0	9
C	Totals	0	12	5	2	4	1	0	24

H. Traffic Enforcement Monthly Total:

010

* Traffic Enforcement	S03	S14	S24	S27	S34	V10	V11	TOT
A Speeding	0	0	0	0	0	0	0	0
B School Zone.	0	0	0	0	0	0	0	0
C Ran Red Light.	0	0	5	0	0	0	0	5
D Ran Stop Sign.	0	0	0	0	0	0	0	0
E Invalid Vehicle Registration	0	0	0	0	0	0	0	0
F Invalid Motor Vehicle Inspect	0	0	0	0	0	0	0	0
G No Seat Belt	0	0	0	0	0	0	0	0
H No Insurance.	0	0	0	0	1	0	0	1
I No Driver's License	0	0	0	0	2	0	0	2
J Defective Equipment	0	0	0	0	0	0	0	0
K Other Violation	0	0	0	0	1	0	0	1
L Written Warnings	0	0	0	0	0	0	0	0
M Verbal Warning	0	0	0	0	0	1	0	1
N Citation	0	0	5	0	4	0	0	9
O Total Violations	0	0	5	0	4	1	0	10

H1. Traffic Enforcement Percentages:

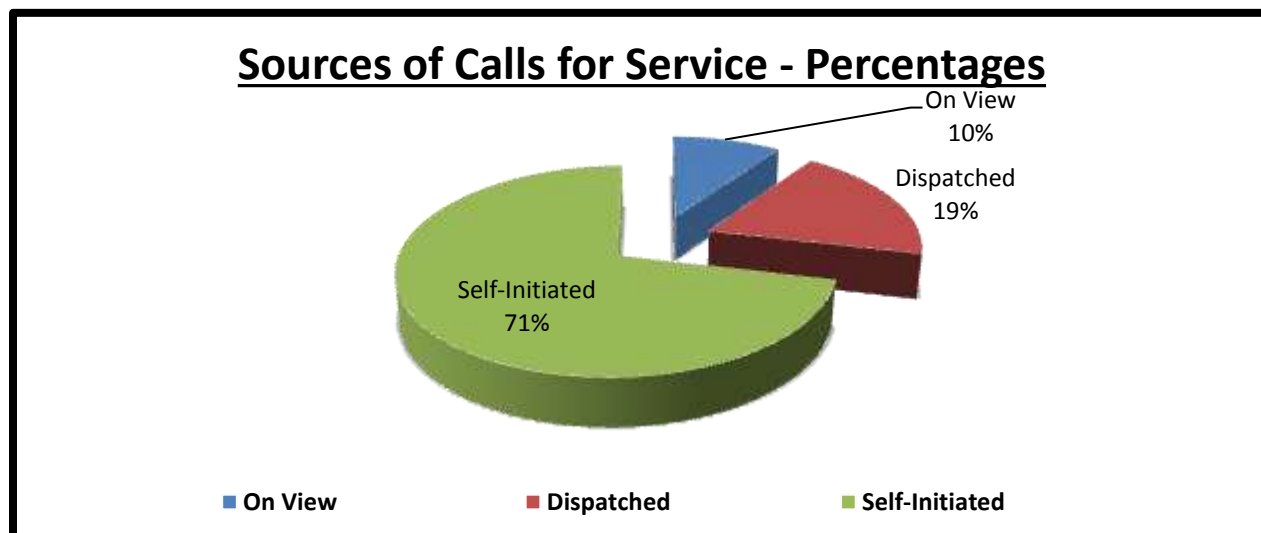


I. Sources of Calls for Service Monthly Total:

1104

* Sources of Calls for Service	S03	S14	S24	S27	S34	V10	V11	TOT
A On View	0	8	1	5	49	22	22	107
B Dispatched	1	40	36	43	12	39	39	210
C Self-Initiated	24	165	213	174	111	50	50	787
D Totals	25	213	250	222	172	111	111	1104

II. Sources of Calls for Service Percentages:



J. Overtime Monthly Total:

000

* Overtime Hours	S03	S14	S24	S27	S34	V10	V11	TOT
A Totals	0	0	0	0	0	0	0	0

K. Free Reserve Personnel Time Utilized in Contract Monthly Total:

000

* Free Reserve Personnel Time	S03	S14	S24	S27	S34	V10	V11	TOT
A Totals	0	0	0	0	0	0	0	0

L. Mileage Monthly Total:

3472

*	Mileage	S03	S14	S24	S27	S34	V10	V11	TOT
A	Totals	N/A	650	651	643	552	498	478	3472

M. Patrol Alert Submission Report:

*	Received				Subject
06x	Date	Time	Code	Location	Extra patrol requested at the location to deter any criminal activity due to increase homeless activity.
A.	Nov 13	2250 hours	MTPA – ID289	McGowen/ Smith	

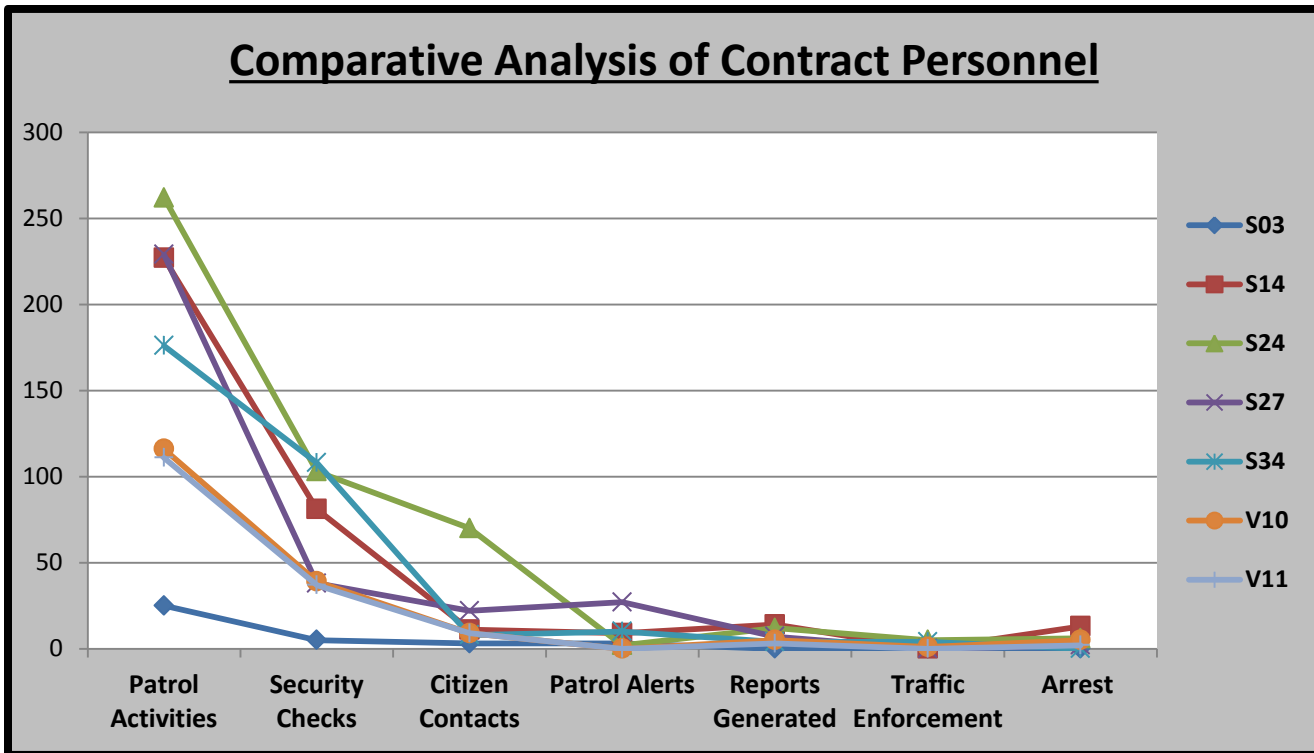
*	Received				Subject
15x	Date	Time	Code	Location	Extra patrol requested at the location to deter any criminal activity due to increase homeless activity.
A.	Nov 15	1015 hours	MTPA – ID291	2404 Caroline	

*	Received				Subject
00x	Date	Time	Code	Location	Extra patrol requested at the location to deter any criminal activity due to individual committing sexual acts.
A.	Nov 20	1102 hours	MTPA – ID not assign	2303 Caroline	

*	Received				Subject
03x	Date	Time	Code	Location	Extra patrol requested at the location to deter any criminal activity due to increase homeless activity.
A.	Nov 19	1432 hours	MTPA – ID not assign	1315 McIlhenny	

*	Received				Subject
00x	Date	Time	Code	Location	Extra patrol requested at the location to deter any criminal activity and loitering in the area.
A.	Nov 30	1845 hours	MTPA – ID305	2800 Main	

N. Comparative Analysis of Assigned Personnel:



O. Incident Summaries:

01.	NOVEMBER 03, 2016	1405 HOURS	NARCOTICS ARREST-POM		DEPUTY T. ROE	
	DAYSHIFT	400 GRAY ST	MIDTOWN	"M"	HC:	16-0176322
<p>On November 03, 2016, a Thursday, at approximately 1405 hours, while on patrol in the "Midtown Contract", Deputy T. Roe was dispatched to the park, upon arrival a male was observed lying down in the park area. After making contact with the suspicious person, Deputy discovered individual had an open felony parole warrant and was in possession of marijuana. The person was transported to the Harris County Jail located at 1201 Commerce without further incident. The patrol activity type is "PAT=D".</p>						

02.	NOVEMBER 04, 2016	1050 HOURS	NARCOTICS ARREST-PCS		DEPUTY T. ROE	
	DAYSHIFT	2100 FANNIN	MIDTOWN	"M"	HC:	16-0176824
<p>On November 04, 2016, a Wednesday, at approximately 1050 hours, while on patrol in the "Midtown Contract", Deputy T. Roe was performing routine patrol and law enforcement services when I (Deputy T. Roe) observed a male put an unknown substance in his mouth and attempt to flee from the scene. Upon making contact with the suspicious person, Deputy discovered individual was in possession of crack cocaine. The person was transported to the Harris County Jail Facility located at 1201 Commerce without further incident. The patrol activity type is "PAT=D".</p>						

03.	NOVEMBER 04, 2016	1440 HOURS	CRIMINAL TRESPASS	DEPUTY C. MANZANARE
	DAYSHIFT:	4200 SAN JACINTO	MIDTOWN	"M"
			HC:	16-0176954
<p>On November 04, 2016, a Friday, at approximately 1440 hours, while on patrol in the "Midtown Contract", Deputy C. Manzanare was performing routine patrol and law enforcement services when I (Deputy C. Manzanare) got dispatched to 4200 San Jacinto St in regards to a male Trespassing after he had been given a verbal trespassing warning earlier today. Upon arrival, I gathered all pertinent information I needed. In addition, 1 adult male was arrested for Criminal Trespassing and a report was generated. The patrol activity type is "PAT=X".</p>				

04.	NOVEMBER 05, 2016	0200 HOURS	WARRANT ARREST	DEPUTY U. FERRETIS
	NIGHTSHIFT:	1200 HOLMAN	MIDTOWN	"M"
			HC:	16-0177307
<p>On November 05, 2016, a Friday, at approximately 0200 hours, while on patrol in the "Mid-Town Contract", Deputy U. Ferretis conducted traffic on the 1200 Holman, which then made contact with the driver. The driver presented a Texas identification Card I then identified the passenger witch came back with open warrants. After warrants were confirmed by dispatch, the defendant was arrested and transported to "Harris County jail" location without further incident. The patrol activity type is "PAT=E".</p>				

05.	NOVEMBER 05, 2016	2130 HOURS	THEFT	DEPUTY M. RODRIGUEZ
	EVENINGSHIFT:	2300 BAGBY ST	MIDTOWN	"M"
			HC:	16-0177695
<p>On November 05, 2016, a Saturday, at approximately 2130 hours, while on patrol in the "Midtown Contract" Deputy M. Rodriguez was performing routine patrol and law enforcement services when I (Deputy M. Rodriguez) was dispatched to a theft that already occurred. The suspect fled the location. Deputy M. Rodriguez collected all pertinent information regarding this case and provided the reportee with a HC case number. The patrol activity type is "PAT=U".</p>				

06.	NOVEMBER 07, 2016	1350 HOURS	PUBLIC INTOXICATION	DEPUTY C. MANZANARE
	DAYSHIFT:	2200 FANNIN ST	MIDTOWN	"M"
			HC:	16-0178592
<p>On November 07, 2016, a Monday, at approximately 1350 hours, while on patrol in the "Midtown Contract", Deputy C. Manzanare was performing routine patrol and law enforcement services when I (Deputy C. Manzanare) was dispatched to a suspicious person that appeared to be intoxicated. Upon making contact with the individual deputy observed he could not maintain his balance, and had a slurred speech. Individual was deemed a danger to himself. The individual was arrested and transported by the Pit Crew to Houston Sobering Center without further incident. The patrol activity type is "PAT=D".</p>				

07.	NOVEMBER 07, 2016	1405 HOURS	PUBLIC INTOXICATION	DEPUTY C. MANZANARE
	DAYSHIFT:	1000 GRAY ST	MIDTOWN	"M"
			HC:	16-0178595
<p>On November 07, 2016, a Monday, at approximately 1405 hours, while on patrol in the "Midtown Contract", Deputy C. Manzanare was performing routine patrol and law enforcement services when I (Deputy C. Manzanare) initiated a welfare check on 1 individual that appeared to be sleeping against a black cast iron fence. Upon making contact with the individual deputy observed he could not maintain his balance, and had a slurred speech. Individual stated he had been drinking alcohol and was deemed a danger to himself or others. The individual was arrested and transported by the Pit Crew to Houston Sobering Center without further incident. The patrol activity type is "PAT=J".</p>				

08.	NOVEMBER 07, 2016	1455 HOURS	WARRANT ARREST	DEPUTY C. MANZANARE
	DAYSHIFT:	2000 MAIN ST	MIDTOWN	"F"
			HC:	16-0178706
<p>On November 07, 2016, a Monday, at approximately 1455 hours, while on patrol in the "Midtown Contract", Deputy C. Manzanare was performing routine patrol and law enforcement services when I (Deputy C. Manzanare) observed adult male impeding traffic multiple times. Upon making contact with the suspect I detained him and asked for identification. Once I checked the suspect on my MDT he showed to have 2 possible out of state warrants one, which was a full extradition warrant out of Michigan. I asked dispatch to check the suspect and confirm the extradition. Once confirmed suspect was arrested and transported to Harris County Jail for booking. The patrol activity type is "PAT=D".</p>				

09.	NOVEMBER 08, 2016	1320 HOURS	WARRANT ARREST	DEPUTY C. MANZANARE
	DAYSHIFT:	1100 CLEBURNE ST	MIDTOWN	"M"
			HC:	16-0179180
<p>On November 08, 2016, a Tuesday, at approximately 1320 hours, while on patrol in the "Midtown Contract", I Deputy C. Manzanare was performing routine patrol and law enforcement services when I (Deputy C. Manzanare) observed a suspicious person that appeared to be in a frozen state. I made contact with the suspect and asked for identification. I checked the suspect on the MDT and he showed to have a warrant arrest for a parole violation. I asked dispatch to check the suspect and confirm the warrant. Once I got confirmation on the warrant the suspect was arrested and Transported to Harris County Jail without further incident. The patrol activity type is "PAT=D".</p>				

10.	NOVEMBER 08, 2016	2255 HOURS	BURGLARY OF MV	DEPUTY M. RODRIGUEZ
	EVENINGSHIFT:	1000 MCGOWEN ST	MIDTOWN	"M"
			HPD:	1429141-16
<p>On November 08, 2016, a Tuesday, at approximately 2255 hours, while on patrol in the "Midtown Contract" Deputy M. Rodriguez was performing routine patrol and law enforcement services when I (Deputy M. Rodriguez) was dispatched in reference to a Burglary of Motor Vehicle that already occurred. Upon making contact with the reportee, Deputy M. Rodriguez collected all pertinent information regarding this case and provided the reportee with a HPD case number. The patrol activity type is "PAT=T".</p>				

11.	NOVEMBER 08, 2016	2255 HOURS	BURGLARY OF MV	DEPUTY M. RODRIGUEZ
	EVENINGSHIFT:	1000 MCGOWEN ST	MIDTOWN	"M"
			HPD:	1429286-16
<p>On November 08, 2016, a Tuesday, at approximately 2255 hours, while on patrol in the "Midtown Contract" Deputy M. Rodriguez was performing routine patrol and law enforcement services when I (Deputy M. Rodriguez) was dispatched in reference to a Burglary of Motor Vehicle that already occurred. Upon making contact with the reportee, Deputy M. Rodriguez collected all pertinent information regarding this case and provided the reportee with a HPD case number. The patrol activity type is "PAT=T".</p>				

12.	NOVEMBER 09, 2016	0945 HOURS	WARRANT ARREST	DEPUTY T. ROE
	DAYSHIFT	2400 CAROLINE	MIDTOWN	"M"
			HC:	16-0179694
<p>On November 09 2016, a Wednesday, at approximately 0945 hours, while on patrol in the "Midtown Contract", Deputy T. Roe was performing routine patrol and law enforcement services when I (Deputy T. Roe) observed a male loitering on property in an intoxicated state. Upon making contact with the suspicious person, Deputy discovered individual had an open felony parole violation warrant. The person was taken into custody and transported to the Harris County Jail Facility located at 1201 Commerce without further incident. The patrol activity type is "PAT=D".</p>				

13.	NOVEMBER 09, 2016	0945 HOURS	WARRANT ARREST		DEPUTY T. ROE	
	DAYSHIFT	2400 CAROLINE	MIDTOWN	"M"	HC:	16-0179694
<p>On November 09, 2016, a Wednesday, at approximately 0945 hours, while on patrol in the "Midtown Contract", Deputy T. Roe was performing routine patrol and law enforcement services when I (Deputy T. Roe) observed a male loitering on property. Upon making contact with the suspicious person, Deputy discovered individual was belligerent and very argumentive, this subject also had an open warrant for possession of a Cannabinoid ("Kush"). The person was taken into custody and transported to the Harris County Jail Facility located at 1201 Commerce without further incident. The patrol activity type is "PAT=D"</p>						

14.	NOVEMBER 09, 2016	1540 HOURS	INFORMATIONAL REPORT		DEPUTY K. JORDAN	
	EVENINGSHIFT:	100 OAK PLACE DR.	MIDTOWN	"N/A"	HC:	16-0180007
<p>On November 09, 2016, a Wednesday, at approximately 1540 hours, while on patrol in the "Midtown Contract", I was dispatched to the 100 block of Oak Place Dr. in relation to a criminal mischief. Upon my arrival, I met with the complaint and a report was made. The patrol activity type is "PAT=Q".</p>						

15.	NOVEMBER 09, 2016	1720 HOURS	BURGLARY OF MV		DEPUTY K. JORDAN	
	EVENINGSHIFT:	1000 MCGOWEN ST.	MIDTOWN	"M"	HPD:	1432580-16
<p>On November 09, 2016, a Wednesday, at approximately 1720 hours, while on patrol in the "Midtown Contract", I was dispatched to the 1000 block of McGowen St. in relation to a burglary of a motor Upon my arrival, I met with the complaint and a report was made. The patrol activity type is "PAT=T".</p>						

16.	NOVEMBER 09, 2016	2045 HOURS	BURGLARY OF MV		DEPUTY M. RODRIGUEZ	
	EVENINGSHIFT:	2500 SMITH ST	MIDTOWN	"M"	HPD:	1433442-16
<p>On November 09, 2016, a Wednesday, at approximately 2045 hours, while on patrol in the "Midtown Contract" Deputy M. Rodriguez was performing routine patrol and law enforcement services when I (Deputy M. Rodriguez) was dispatched in reference to a Burglary of Motor Vehicle that already occurred. Upon making contact with the reportee, Deputy M. Rodriguez collected all pertinent information regarding this case and provided the reportee with a HPD case number. The patrol activity type is "PAT=T".</p>						

17.	NOVEMBER 09, 2016	2045 HOURS	BURGLARY OF MV		DEPUTY M. RODRIGUEZ	
	EVENINGSHIFT:	2500 SMITH ST	MIDTOWN	"M"	HPD:	1433438-16
<p>On November 09, 2016, a Wednesday, at approximately 2045 hours, while on patrol in the "Midtown Contract" Deputy M. Rodriguez was performing routine patrol and law enforcement services when I (Deputy M. Rodriguez) was dispatched in reference to a Burglary of Motor Vehicle that already occurred. Upon making contact with the reportee, Deputy M. Rodriguez collected all pertinent information regarding this case and provided the reportee with a HPD case number. The patrol activity type is "PAT=T".</p>						

18.	NOVEMBER 10, 2016	2300 HOURS	BURGLARY OF MV		DEPUTY U. FERRETIS	
	NIGHTSHIFT:	2100 BAGBY	MIDTOWN	"M"	HPD:	1438322-16
<p>On November 10, 2016, a Thursday, at approximately 2300 hours, while on patrol in the "Mid-Town Contract", Deputy U. Ferretis was dispatched to 2300 Block of Bagby Street in relation to Burglary of Motor Vehicle. Upon my arrival, I identified the Complainants (victims). After confirmation and concluding my report, I informed the complainant's about their police report, without further incident. The patrol activity type is "PAT=T".</p>						

19.	NOVEMBER 10, 2016	2000 HOURS	INFORMATIONAL REPORT		DEPUTY K. JORDAN	
	EVENINGSHIFT:	400 RICHMOND AVE.	MIDTOWN	"N/A"	HC:	16-0180666
<p>On November 10, 2016, a Thursday, at approximately 1958 hours, while on patrol in the "Midtown Contract", I dispatched to the 400 block of Richmond Street in relation to a black male who continues to come on the property after being asked on several occasion to leave. Upon arrival, I identified the unknown male and discovered that said person was having a mental crisis. The person was placed in custody and transported to "Ben Taub Nero Psychiatric Center" location without further incident. The patrol activity type is "PAT=O".</p>						

20.	NOVEMBER 11, 2016	0200 HOURS	WARRANT ARREST		DEPUTY U. FERRETIS	
	NIGHTSHIFT:	1400 WEBSTER	MIDTOWN	"M"	HC:	16-0181364
<p>On November 11, 2016, a Friday, at approximately 0200 hours, while on patrol in the "Mid-Town Contract", Deputy U. Ferretis conducted traffic on the 1400 Webster St, which then made contact with the driver. The driver presented a Texas Identification card witch came back with open warrants. After warrants were confirmed by dispatch, the defendant was arrested and transported to "Harris County jail" location without further incident. The patrol activity type is "PAT=E".</p>						

21.	NOVEMBER 11, 2016	1840 HOURS	ASSAULT		DEPUTY K. JORDAN	
	EVENINGSHIFT:	2700 TRAVIS ST.	MIDTOWN	"M"	HPD:	1441672-16
<p>On November 11, 2016, a Thursday, at approximately 1840 hours, while on patrol in the "Midtown", I was dispatched to the 2700 block of Travis Street in relation to an assault. Upon arrival, I met with the complaint and a report was made. The patrol activity type is "PAT=V".</p>						

22.	NOVEMBER 12, 2016	0825 HOURS	WARRANT ARREST		DEPUTY J. MALDONADO	
	DAYSHIFT:	2100 FANNIN	MIDTOWN	"F"	HC:	16-0181431
<p>On November 12, 2016, a Saturday at approximately 0825 hours, while on patrol in the "Midtown Contract", Deputy J. Maldonado was performing routine patrol and law enforcement services when I (Deputy J. Maldonado) observed a male consuming an alcoholic beverage in a prohibited place. Upon making contact with the suspicious person, Deputy discovered individual had an open warrant for a Parole Violation. The patrol activity type is "PAT=D".</p>						

23.	NOVEMBER 13, 2016	1835 HOURS	THEFT		DEPUTY M. RODRIGUEZ	
	EVENINGSHIFT:	400 GRAY ST	MIDTOWN	"M"	HPD:	1450408-16
<p>On November 13, 2016, a Tuesday, at approximately 1835 hours, while on patrol in the "Midtown Contract" Deputy M. Rodriguez was performing routine patrol and law enforcement services when I (Deputy M. Rodriguez) was dispatched to a theft that already occurred. The suspect fled the location. Deputy M. Rodriguez collected all pertinent information regarding this case and provided the reportee with a HPD case number. The patrol activity type is "PAT=U".</p>						

24.	NOVEMBER 14, 2016	1450 HOURS	PUBLIC INTOXICATION			DEPUTY C. MANZANARE	
	DAYSHIFT:	FANNIN ST/ WEBSTER	MIDTOWN	"M"	HC:	16-0182679	
<p>On November 14, 2016, a Monday, at approximately 1450 hours, while on patrol in the "Midtown Contract", Deputy C. Manzanare was performing routine patrol and law enforcement services when I (Deputy C. Manzanare) was dispatched to assist the Pit Crew with 1 intoxicated person. Upon making contact deputy observed the suspect having a hard time maintaining his balance and had a slurred speech. The suspect was deemed a danger to himself or others. He was arrested and transported by the Pit Crew to Houston Sobering Center without further incident. The patrol activity type is "PAT=D".</p>							
25.	NOVEMBER 14, 2016	1540 HOURS	MINOR ACCIDENT			DEPUTY C. MANZANARE	
	DAYSHIFT:	TRAVIS ST/ ELGIN ST	MIDTOWN	"N/A"	HC:	16-0182679	
<p>On November 14, 2016, a Monday, at approximately 1540 hours, while on patrol in the "Midtown Contract", Deputy C. Manzanare was performing routine patrol and law enforcement services when I (Deputy C. Manzanare) got dispatch to a minor crash. I got all pertinent information from both parties and a case# was handed to them. I generated a Crash Report and a County Report. The patrol activity type is "PAT=Y".</p>							
26.	NOVEMBER 14, 2016	2135 HOURS	MISSING PERSON			DEPUTY M. RODRIGUEZ	
	EVENINGSHIFT:	2000 MAIN ST	MIDTOWN	"M"	HC:	16-0182927	
<p>On November 14, 2016, a Wednesday, at approximately 2135 hours, while on patrol in the "Midtown Contract" Deputy M. Rodriguez was performing routine patrol and law enforcement services when I (Deputy M. Rodriguez) was dispatched in reference to a Suspicious Person refusing to leave a business. Upon making contact with the Subject, she was found to be reported as a Missing Person from a neighboring city. Deputy Rodriguez contacted the Subjects family and advised of her current location. The family then came and picked up the missing person who suffers from a crisis. The patrol activity type is "PAT=BB".</p>							
27.	NOVEMBER 15, 2016	1550 HOURS	INDECENT EXPOSURE			DEPUTY C. MANZANARE	
	DAYSHIFT:	1100 ROSALIE ST	MIDTOWN	"M"	HC:	16-0183310	
<p>On November 15, 2016, a Tuesday, at approximately 1550 hours, while on patrol in the "Midtown Contract", Deputy C. Manzanare was performing routine patrol and law enforcement services when I (Deputy C. Manzanare) got dispatch to a suspicious person call. Upon making contact with the suspect the Complainant made my location and advised the suspect had his genital area out in public. I got all pertinent information to the case and placed the suspect under arrest for indecent exposure. The suspect was then transported to Harris County Jail where he was released to the staff without further incident The patrol activity type is "PAT=D".</p>							
28.	NOVEMBER 16, 2016	2000 HOURS	WARRANT ARREST			DEPUTY K. JORDAN	
	EVENINGSHIFT:	2300 MAIN	MIDTOWN	"M"	HC:	16-0184093	
<p>On November 16, 2016, a Wednesday, at approximately 2000 hours, while on patrol in the "Midtown Contract", I observed a black male and female having a verbal dispute in the 2300 block of Main Street. I identified the suspicious person and discovered that the black female was had an outstanding warrant for her arrest. After confirmation of said warrant, The person was arrested and transported to "Harris County Jail" location without further incident. The patrol activity type is "PAT=P".</p>							

29.	NOVEMBER 17, 2016	0020 HOURS	THEFT		DEPUTY U. FERRETIS	
	NIGHTSHIFT:	2100 MAIN ST	MIDTOWN	"M"	HPD:	1470102-16
<p>On November 17, 2016, a Thursday, at approximately 0020 hours, while on patrol in the "Mid-Town Contract", Deputy U. Ferretis was dispatched to a Theft on the 2100 Main St, Complaint advised that the security guard had one detain when making contact with the security guard they stated that suspect handed a luggage to another individual outside the building without further incident. The patrol activity type is "PAT=E".</p>						

30.	NOVEMBER 17, 2016	1605 HOURS	AGGRAVATED ROBBERY		DEPUTY K. JORDAN	
	EVENINGSHIFT:	2600 SAN JACINTO	MIDTOWN	"F"	HPD:	1467859-16
<p>On November 17, 2016, a Thursday, at approximately 1605 hours, while on patrol in the "Midtown Contract", I was dispatched to the 2800 block of Caroline Street in relation to an aggravated robbery that occurred in the 2800 block of San Jacinto street. Upon arrival, I met with the complaint and a report was made. The patrol activity type is "PAT=W".</p>						

31.	NOVEMBER 18, 2016	1255 HOURS	CRIMINAL TRESPASS		DEPUTY C. MANZANARE	
	DAYSHIFT:	4200 SAN JACINTO	MIDTOWN	"M"	HC:	16-0185100
<p>On November 18, 2016, a Friday, at approximately 1255 hours, while on patrol in the "Midtown Contract", Deputy C. Manzanare was performing routine patrol and law enforcement services when I (Deputy C. Manzanare) got dispatched to 4200 San Jacinto St in regards to a male Trespassing after he had been given a verbal/written trespassing warning prior to today. Upon arrival I gathered all pertinent information for the case. In addition, 1 adult male was arrested for Criminal Trespassing and transported to Harris County Jail. Report was generated. The patrol activity type is "PAT=X".</p>						

32.	NOVEMBER 19, 2016	2035 HOURS	WARRANT ARREST		DEPUTY M. RODRIGUEZ	
	EVENINGSHIFT:	2600 SMITH ST	MIDTOWN	"M"	HC:	16-1085924
<p>On November 19, 2016, a Monday, at approximately 2035 hours, while on patrol in the "Midtown Contract" Deputy M. Rodriguez was performing routine patrol and law enforcement services when I (Deputy M. Rodriguez) preformed a traffic stop after observing a vehicle Run a Red Light. The driver was found to have an outstanding warrant for his arrest. Deputy Rodriguez confirmed the warrant with the issuing agency. The individual was transported to the Harris County Jail located at 1201 Commerce St. without further incident. The patrol activity type is "PAT=F".</p>						

33.	NOVEMBER 20, 2016	1700 HOURS	PUBLIC INTOXICATION		DEPUTY C. MANZANARE	
	DAYSHIFT:	1000 GRAY ST	MIDTOWN	"M"	HC:	16-0186277
<p>On November 20, 2016, a Sunday, at approximately 1700 hours, while on patrol in the "Midtown Contract", Deputy C. Manzanare was performing routine patrol and law enforcement services when I (Deputy C. Manzanare) initiated a welfare check on 1 individual that appeared to be sleeping on the sidewalk. Upon making contact with the individual deputy observed he could not maintain his balance, and had a slurred speech. Individual stated he had been drinking alcohol only and was deemed a danger to himself or others. The individual was arrested and transported to Houston Sobering Center without further incident. The patrol activity type is "PAT=J".</p>						

34.	NOVEMBER 20, 2016	2010 HOURS	PUBLIC INTOXICATION		DEPUTY M. RODRIGUEZ	
	EVENINGSHIFT:	2300 LOUISIANA ST	MIDTOWN	"M"	HC:	16-0186362
<p>On November 20, 2016, a Monday, at approximately 2010 hours, while on patrol in the "Midtown Contract" Deputy M. Rodriguez was performing routine patrol and law enforcement services when I (Deputy M. Rodriguez) was dispatched in reference to a disturbance. Deputy Rodriguez made contact with both subjects and believed them to be intoxicated to the point where they were a danger to themselves and the public. One individual was transported to the Houston Sobering Center at 150 N. Chenevert St. The second subject was transported to Ben Taub Hospital for psychological evaluation without incident. The patrol activity type is "PAT=F".</p>						

35.	NOVEMBER 21, 2016	1425 HOURS	WARRANT/POSS OF MARIJUA		DEPUTY C. MANZANARE	
	DAYSHIFT:	2400 CAROLINE ST	MIDTOWN	"M"	HC:	16-0186723
<p>On November 21, 2016, a Monday, at approximately 1425 hours, while on patrol in the "Midtown Contract", Deputy C. Manzanare was performing routine patrol and law enforcement services when I (Deputy C. Manzanare) put myself out on a disturbance involving 2 males. During the investigation one of the males had warrants out for his arrest and also has Marijuana in his right sock. Suspect was arrested and transported to Harris county Jail without further incident. The patrol activity type is "PAT=P".</p>						

36.	NOVEMBER 23, 2016	1050 HOURS	CRIMINAL TRESPASS		DEPUTY T. ROE	
	DAY SHIFT	2600 CAROLINE	MIDTOWN	"M"	HC:	16-0187763
<p>On November 23, 2016, a Wednesday, at approximately 1050 hours, while on patrol in the "Midtown Contract", Deputy T. Roe was performing routine patrol and law enforcement services when I (Deputy T. Roe) observed a known male that was warned multiple times prior to this incident about trespassing on property. The suspect was taken into custody and transported to the Harris County Jail Facility located at 201 Commerce without further incident. The patrol activity type is "PAT=D".</p>						

37.	NOVEMBER 23, 2016	2020 HOURS	THEFT		DEPUTY K. JORDAN	
	EVENINGSHIFT:	4200 SAN JACINTO ST.	MIDTOWN	"M"	HC:	16-0188087
<p>On November 23, 2016, a Wednesday, at approximately 2020 hours, while on patrol in the "Midtown Contract", I was dispatched to the 4200 block of San Jacinto Street in relation to a theft, Upon arrival, I met with the complaint who had a black male detained for shoplifting. I identified the unknown black male, placed him under arrested for theft, and he was transported to "Harris County Jail 1" location without further incident. The patrol activity type is "PAT=U".</p>						

38.	NOVEMBER 25, 2016	1230 HOURS	PUBLIC INTOXICATION		DEPUTY J. MALDONADO	
	DAYSHIFT	2000 MAIN	MIDTOWN	"M"	HC:	16-0188719
<p>On October 12, 2016, a Wednesday, at approximately 1230 hours, while on patrol in the "Midtown Contract", Deputy J. Maldonado was performing routine patrol and law enforcement services when I (Deputy J. Maldonado) observed a male passed out in the middle of the roadway. Upon making contact with the suspicious person, Deputy discovered individual was under the influence of Kush and his actions and demeanor placed him in danger to himself along a danger to the general public. The person was transported to the Sobering Center located at 150 North Chenevert without further incident. The patrol activity type is "PAT=D".</p>						

39.	NOVEMBER 26, 2016	1430 HOURS	SIMPLE ASSAULT	DEPUTY C. MANZANARE
	DAYSHIFT:	2200 MAIN ST	MIDTOWN	"M"
			HC:	16-0189235
<p>On November 26, 2016, a Saturday, at approximately 1430 hours, while on patrol in the "Midtown Contract", Deputy C. Manzanare was performing routine patrol and law enforcement services when I (Deputy C. Manzanare) got dispatched to a disturbance call. Upon arrival I made contact with the complainant who advised that an unknown black male grabbed his wrist causing pain and discomfort. He also stated he would like to file charges if the suspect was caught. I was unable to retrieve any video or pictures of the suspect at the time of the investigation. I provided the complainant with a case number and a report was generated. The patrol activity type is "PAT=P".</p>				

40.	NOVEMBER 28, 2016	1630 HOURS	SIMPLE ASSAULT SUPPL	DEPUTY C. MANZANARE
	DAYSHIFT:	2200 MAIN ST	MIDTOWN	"M"
			HC:	16-0189235
<p>On November 28, 2016, a Monday, at approximately 1630 hours, while on patrol in the "Midtown Contract", Deputy C. Manzanare was performing routine patrol and law enforcement services when I (Deputy C. Manzanare) followed up on a simple assault that had occurred 2 days ago. Upon arrival I met with the complainant at 2220 Main St and attempted to get video of the assault or a picture of the suspect. Complainant stated to me "to leave it alone and don't worry about it" due to the fact that the manager forgot the password to the DVR and they are unable to retrieve the video. A supplement report was generated. The patrol activity type is "PAT=R".</p>				

41.	NOVEMBER 28, 2016	1245 HOURS	MAJOR ACCIDENT	DEPUTY C. MANZANARE
	DAYSHIFT:	FANNIN ST/ ELGIN ST	MIDTOWN	"N/A"
			HC:	16-0190187
<p>On November 28, 2016, a Monday, at approximately 1245 hours, while on patrol in the "Midtown Contract", Deputy C. Manzanare was performing routine patrol and law enforcement services when I (Deputy C. Manzanare) observed to be an auto and pedestrian accident. I got all pertinent information from both parties and a case# was handed to them. I generated a Crash Report and a County Report. The patrol activity type is "PAT=Y".</p>				

42.	NOVEMBER 28, 2016	2005 HOURS	PUBLIC INTOXICATION	DEPUTY M. RODRIGUEZ
	EVENINGSHIFT:	2000 MAIN ST	MIDTOWN	"M"
			HC:	16-0190460
<p>On November 28, 2016, a Monday, at approximately 2005 hours, while on patrol in the "Midtown Contract" Deputy M. Rodriguez was performing routine patrol and law enforcement services when I (Deputy M. Rodriguez) was dispatched in reference to a Public Intoxication. Deputy Rodriguez believed the two subjects to be intoxicated to the point where they were a danger to themselves and the public. Both individuals were transported to the Houston Sobering Center at 150 N. Chenevert St via P.I.T crew van without incident. The patrol activity type is "PAT=F".</p>				

43.	NOVEMBER 28, 2016	2025 HOURS	PUBLIC INTOXICATION	DEPUTY M. RODRIGUEZ
	EVENINGSHIFT:	2000 MAIN ST	MIDTOWN	"M"
			HC:	16-0190480
<p>On November 28, 2016, a Monday, at approximately 2025 hours, while on patrol in the "Midtown Contract" Deputy M. Rodriguez was performing routine patrol and law enforcement services when I (Deputy M. Rodriguez) was dispatched in reference to a Public Intoxication. Deputy Rodriguez believed the subject to be intoxicated to the point where he was a danger to himself and the public. The individual was transported to the Houston Sobering Center at 150 N. Chenevert St without incident. The patrol activity type is "PAT=F".</p>				

44.	NOVEMBER 28, 2016	2245 HOURS	PUBLIC INTOXICATION		DEPUTY M. RODRIGUEZ	
	EVENINGSHIFT:	2100 MAIN ST	MIDTOWN	"M"	HC:	16-0190542
	<p>On November 28, 2016, a Monday, at approximately 2245 hours, while on patrol in the "Midtown Contract" Deputy M. Rodriguez was performing routine patrol and law enforcement services when I (Deputy M. Rodriguez) was dispatched in reference to a Disturbance. Deputy Rodriguez believed the subject to be intoxicated to the point where she was a danger to herself and the public. The individual was transported to the Houston Sobering Center at 150 N. Chenevert St without incident.</p> <p>The patrol activity type is "PAT=F".</p>					

45.	NOVEMBER 30, 2016	1125 HOURS	BURGLARY OF MV		DEPUTY J. MALDONADO	
	DAYSHIFT	2000 BAGBY	MIDTOWN	"M"	HPD:	15212716
	<p>On November 30, 2016, a Wednesday, at approximately 1125 hours, while on patrol in the "Midtown Contract", Deputy J. Maldonado was performing routine patrol and law enforcement services when I (Deputy J. Maldonado) was dispatched to this location in regards to a Burglary of Motor Vehicle. After an investigation at the scene, a HPD report was initiated. The patrol activity type is "PAT=D"</p>					

P. Hotspot Report:

See Appendix A1 for Hotspot Report:

Please note: 87s03 = Sgt. O. Haynes, 87s14 = Deputy B. Thomas/Deputy C. Manzanare, 87s24 = Deputy M. Rodriguez, 87s27 = Deputy K. Jordan, 87s34 = Deputy U. Ferretis, 87v10 = Deputy T. Roe and 87v11 = Deputy J. Maldonado. N/A under Mileage refers to the assigned marked take home unit provide to Sgt. Haynes.

Lieutenant Holland D. Jones

Lieutenant Holland D. Jones, MA, JD, PhD.

Toll Road Division Supervisor & Departmental Training Coordinator

Harris County Constable's Office of Precinct "7"

713-643-6602 OR 832-892-7893