



MAY WALKER, CONSTABLE
PRECINCT SEVEN
HARRIS COUNTY, TEXAS

MAIN OFFICE
5300 Griggs Road
Houston, Texas 77021
PHONE (713) 643-6602
FAX (713) 643-3401

Date: 09/01/2016

From: Lieutenant Holland D. Jones, *BS, MA, JD.*
Toll Road Division Supervisor & Departmental Training Coordinator
Harris County Constable's Office of Precinct "7"

To: Midtown Management District
Public Safety Committee & Midtown Board of Directors

Subject: August Midtown Monthly Report

Enclosure: **Neighborhood Contract Performance Report**

Distribution: Public Safety Committee & Midtown Board of Directors

The purpose of this "**Contract Performance Report**" is to provide the Board of Directors with a detailed report of the services provided by the Harris County Constable's Office of Precinct Seven for the **performance of month of August 2016**. With regard to the specific contents of the report, there are 16 distinctive component parts of this report. These components are enumerated below:

- | | |
|--|---|
| 01. Patrol Activity Details | 10. Traffic Enforcement Report |
| 02. Patrol Activity Analytical Summary | 11. Trends & Percentages of Traffic |
| 03. Patrol Activity Percentages & Trends | 12. Citation & Warning Issuance Review |
| 04. Security Checks Report | 13. Call for Service Report (<i>C.F.S.</i>) |
| 05. Security Checks Percentages & Trends | 14. Trends & Percentages for <i>C.F.S.</i> |
| 06. Crisis Intervention Disposition Report | 15. Overtime Report (service at no Cost) |
| 07. Offense/Incident Generation Report | 16. Reserve Deputy Use (at no Cost) |
| 08. Criminal Arrest Types Report | 17. Incident Summarization |
| 09. Warrant Execution Report | 18. Hotspot Report Data Review |

Each component is calculated separately to achieve the category totals. A cursory analysis of the statistical data from this report should be demonstrative of the quality of performance of this agency in realizing the contractual obligations to achieve the overall goals and objectives of this Agency and the Midtown.

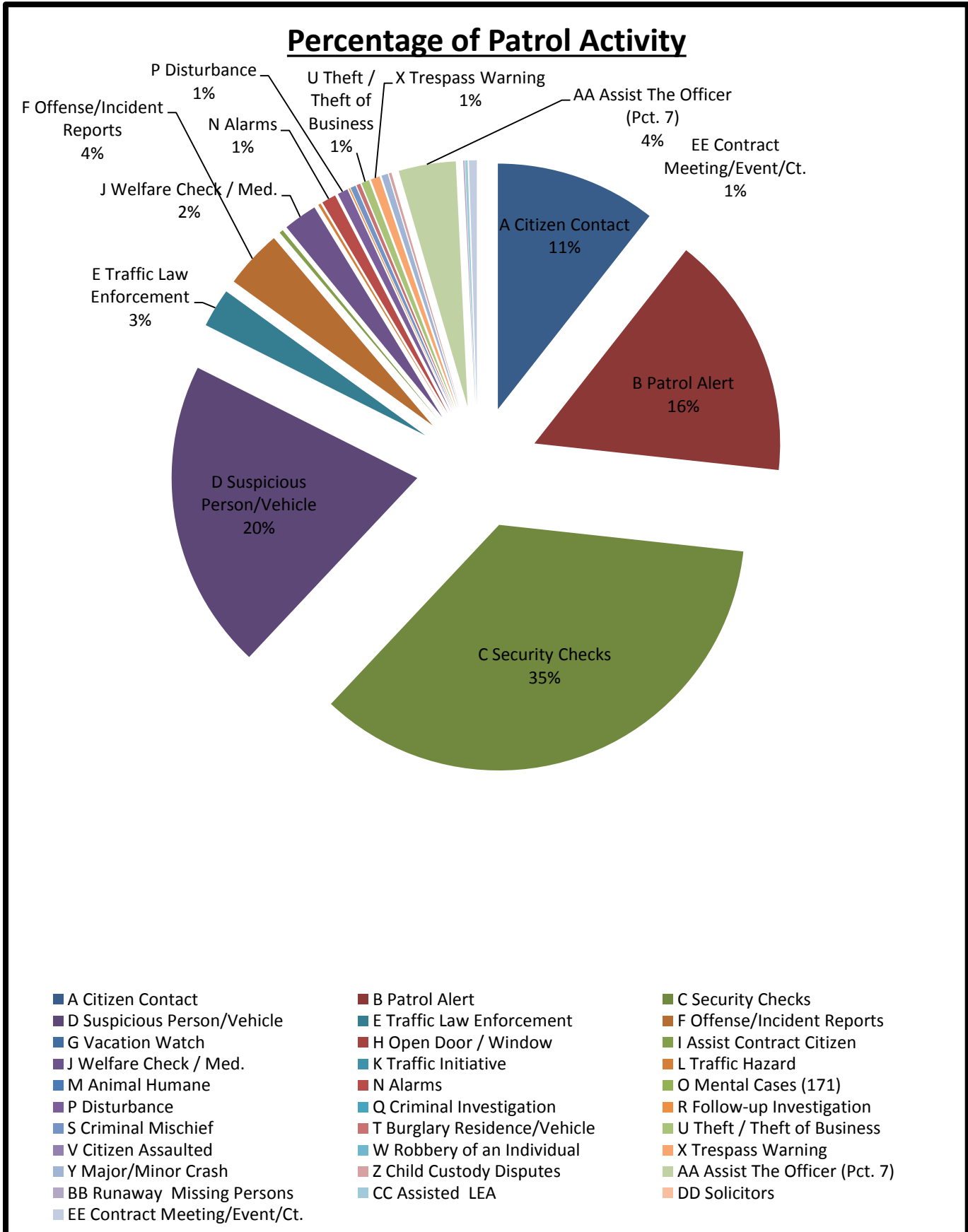
In addition, this report will encompass an incident summary category which will provide a brief synopsis of any significant incidents that have occurred during the evaluation month. The information accumulated will be utilized to identify spatial concentrations of significant incidents or offenses that required the generation of a police report by Midtown Law Enforcement Personnel.

A. Patrol Activity Monthly Total:

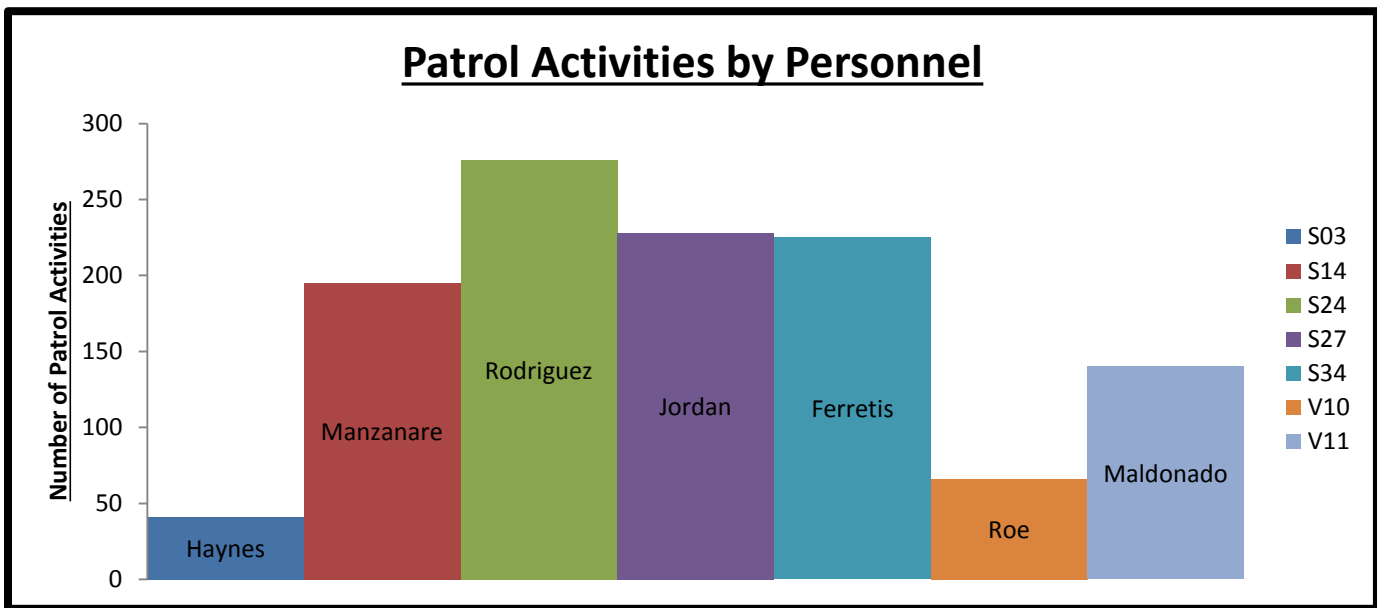
1171

*	<i>Patrol Activity Types</i>	S03	S14	S24	S27	S34	V10	V11	TOT
A	Citizen Contact	7	8	56	13	5	13	22	124
B	Patrol Alert	4	17	56	58	54	0	0	189
C	Security Checks	14	95	86	30	122	22	44	413
D	Suspicious Person/Vehicle	3	43	24	72	13	28	56	239
E	Traffic Law Enforcement	0	7	9	5	8	0	1	30
F	Offense/Incident Reports	1	6	10	14	7	1	6	45
G	Vacation Watch	0	0	0	0	0	0	0	0
H	Open Door / Window	0	0	0	0	0	0	0	0
I	Assist Contract Citizen	0	0	2	0	1	0	0	3
J	Welfare Check / Med.	0	10	9	6	1	0	0	26
K	Traffic Initiative	0	0	0	0	0	0	0	0
L	Traffic Hazard	0	1	1	0	0	0	0	2
M	Animal Humane	0	0	0	0	0	0	0	0
N	Alarms	1	0	5	3	0	1	1	11
O	Mental Cases (171)	0	0	0	0	0	0	0	0
P	Disturbance	0	0	1	6	1	0	0	8
Q	Criminal Investigation	0	0	0	0	0	0	0	0
R	Follow-up Investigation	1	0	0	0	0	0	0	1
S	Criminal Mischief	0	0	1	0	2	0	1	4
T	Burglary Residence/Vehicle	0	0	2	0	0	0	1	3
U	Theft / Theft of Business	0	2	0	1	0	1	2	6
V	Citizen Assaulted	0	0	0	0	0	0	0	0
W	Robbery of an Individual	0	0	0	0	0	0	0	0
X	Trespass Warning	0	0	0	7	0	0	0	7
Y	Major/Minor Crash	1	4	0	0	0	0	0	5
Z	Child Custody Disputes	0	0	0	2	0	0	0	2
AA	Assist The Officer (Pct. 7)	4	1	12	10	11	0	6	44
BB	Runaway Missing Persons	0	1	0	0	0	0	0	1
CC	Assisted LEA	2	0	0	0	0	0	0	2
DD	Solicitors	0	0	0	0	0	0	0	0
EE	Contract Meeting/Event/Ct.	3	0	2	1	0	0	0	6
*	<i>MONTH TOTALS</i>	41	195	276	228	225	66	140	1171

A1. Patrol Activity Percentage:



A2. Patrol Activity by Midtown Personnel:

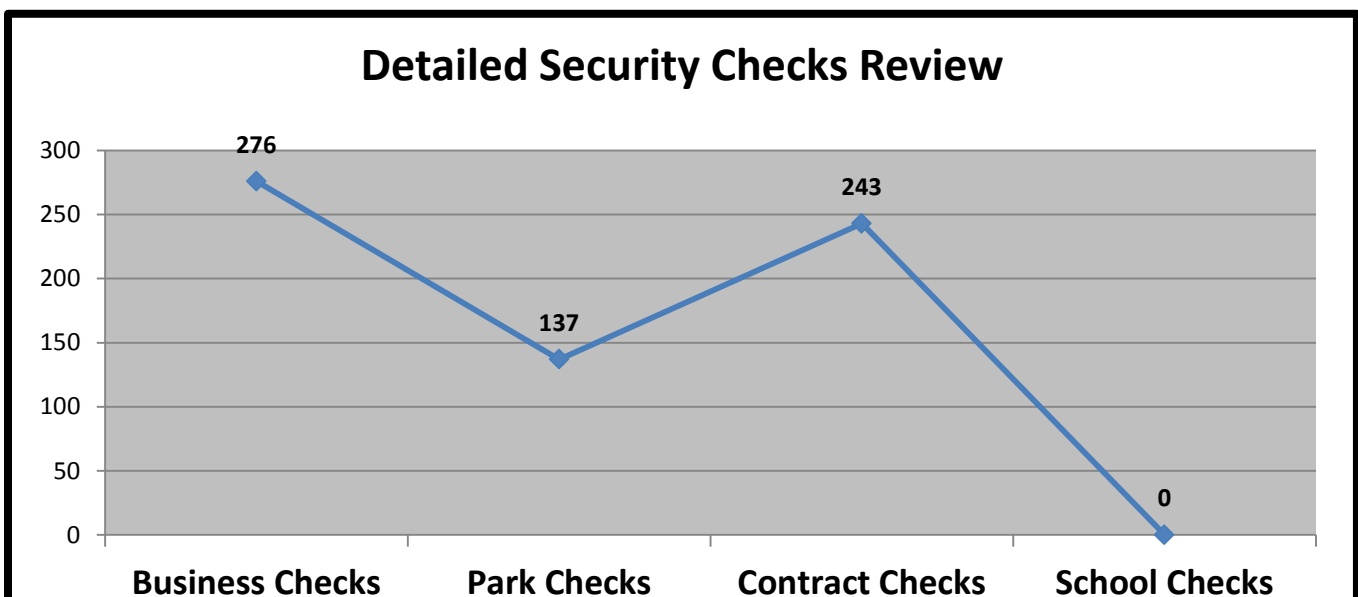


B. Security Checks Monthly Total:

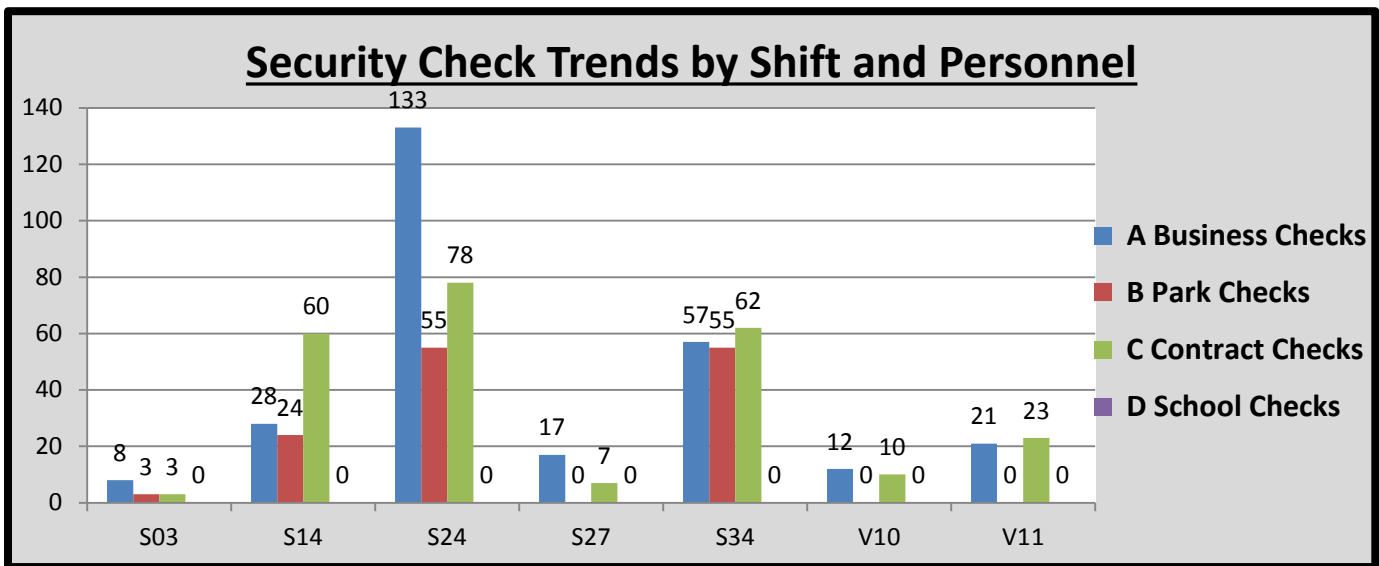
656

* Security Checks	S03	S14	S24	S27	S34	V10	V11	TOT
A Business Checks	8	28	133	17	57	12	21	276
B Park Checks	3	24	55	0	55	0	0	137
C Contract Checks	3	60	78	7	62	10	23	243
D School Checks	0	0	0	0	0	0	0	0
E Totals	14	112	266	24	174	22	44	656

B1. Detailed Security Checks Review:



B2. Security Check Trends:



C. CIT/MHO Dispositions Monthly Total:

003

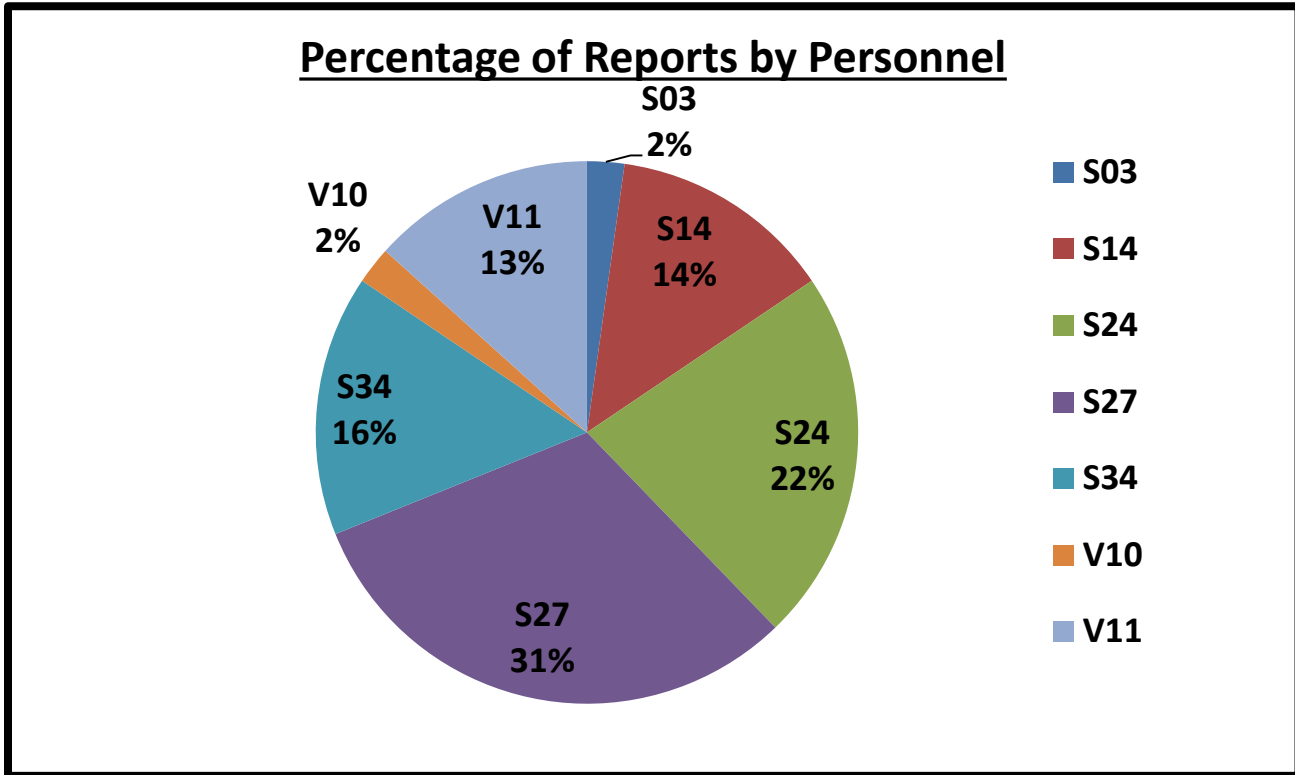
*	<i>C.I.T. Dispositions</i>	S03	S14	S24	S27	S34	V10	V11	TOT
A	CIT/MHO Outside Referral	0	0	0	0	0	0	0	0
B	CIT/MHO Transport	0	0	0	0	0	0	0	0
C	CIT/MHO CIT Contact	0	0	0	1	0	0	0	1
D	CIT/MHO Arrest	0	0	0	0	2	0	0	2
E	<i>Totals</i>	0	0	0	1	2	0	0	3

D. Offense/Incident Reports Monthly Total:

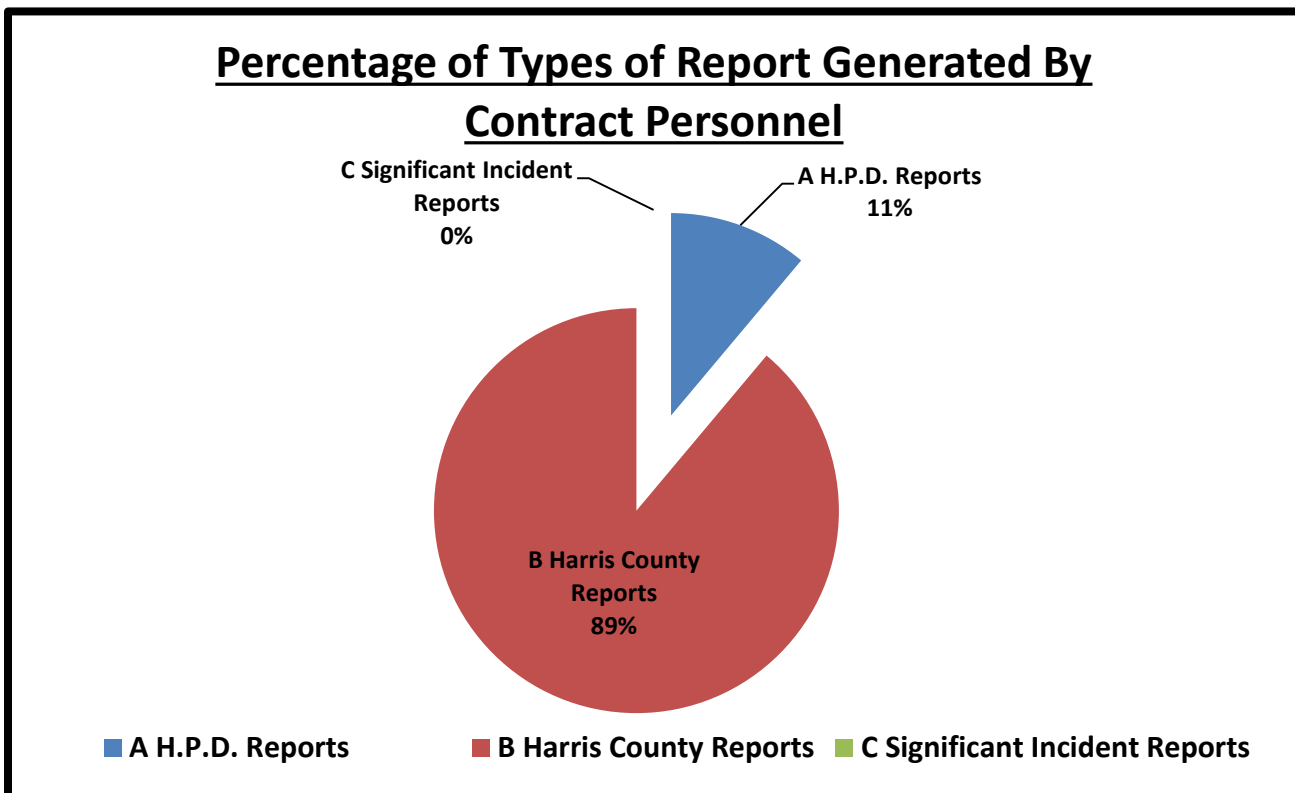
045

*	<i>Offense/Incident Reports</i>	S03	S14	S24	S27	S34	V10	V11	TOT
A	H.P.D. Reports	0	0	4	1	0	0	0	5
B	Harris County Reports	1	6	6	13	7	1	6	40
C	Significant Incident Reports	0	0	0	0	0	0	0	0
D	<i>Totals</i>	1	6	10	14	7	1	6	45

D1. Report Generation Percentages:



D2. Percentages:

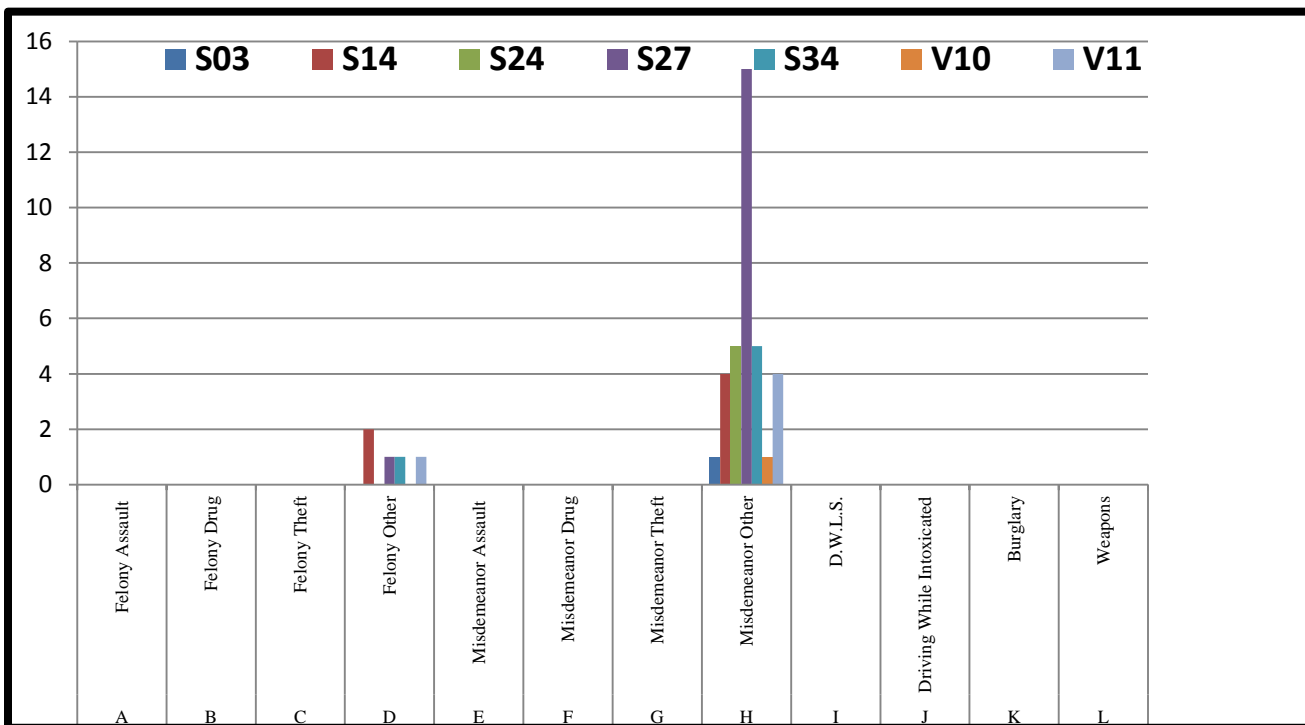


E. Types of Criminal Arrests Monthly Total:

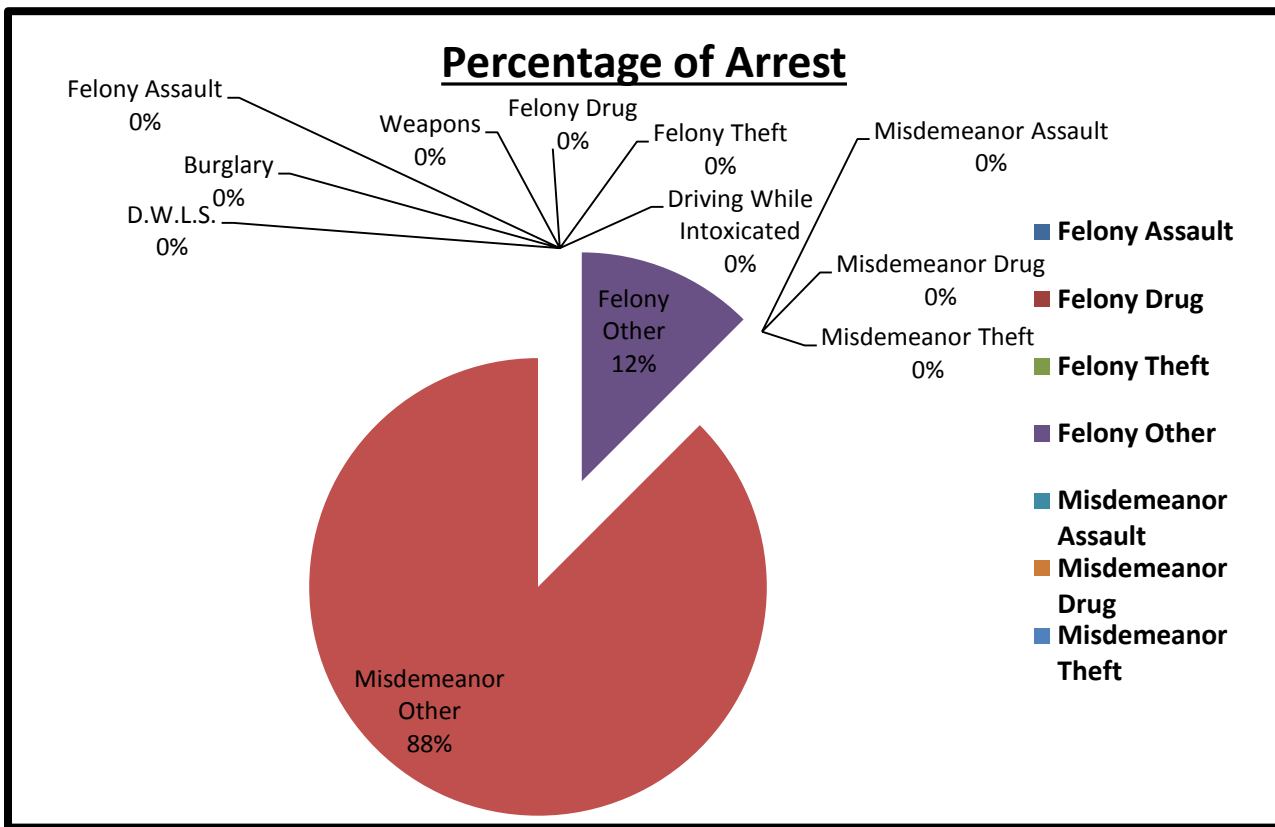
0040

* <i>Types of Criminal Arrests</i>	S03	S14	S24	S27	S34	V10	V11	TOT
A Felony Assault	0	0	0	0	0	0	0	0
B Felony Drug	0	0	0	0	0	0	0	0
C Felony Theft	0	0	0	0	0	0	0	0
D Felony Other	0	2	0	1	1	0	1	5
E Misdemeanor Assault	0	0	0	0	0	0	0	0
F Misdemeanor Drug	0	0	0	0	0	0	0	0
G Misdemeanor Theft	0	0	0	0	0	0	0	0
H Misdemeanor Other	0	1	0	0	2	0	0	3
I Sobriety Center	1	3	5	15	3	1	4	32
J Driving While Intoxicated	0	0	0	0	0	0	0	0
K Burglary	0	0	0	0	0	0	0	0
L Weapons	0	0	0	0	0	0	0	0
M Totals								
	1	6	5	16	6	1	5	40

E1. Types of Criminal Arrests Monthly Total:



E2. Percentage of Arrest:



F. Executed Warrant Monthly Total:

006

*	<i>Executed Warrants</i>	S03	S14	S24	S27	S34	V10	V11	TOT
A	Felony Warrants	0	2	0	1	1	0	0	4
B	Misdemeanor Warrants	0	0	0	2	0	0	0	2
C	<i>Totals</i>	0	2	0	3	1	0	0	6

G. Citations vs. Warnings Monthly Total:

039

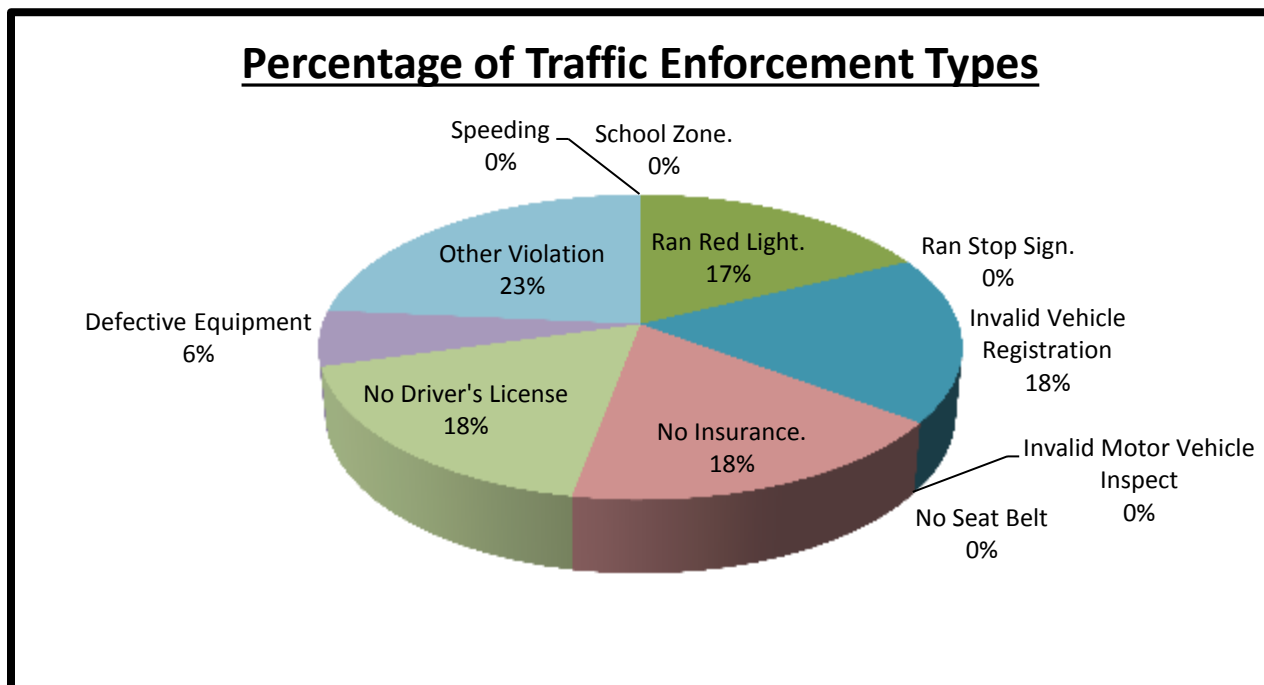
*	<i>Warnings vs. Citations</i>	S03	S14	S24	S27	S34	V10	V11	TOT
A	Written/Verbal Warnings	0	5	6	3	8	0	0	22
B	Citations	0	6	9	2	0	0	0	17
C	<i>Totals</i>	0	11	15	5	8	0	0	39

H. Traffic Enforcement Monthly Total:

036

* Traffic Enforcement	S03	S14	S24	S27	S34	V10	V11	TOT
A Speeding	0	0	0	0	0	0	0	0
B School Zone.	0	0	0	0	0	0	0	0
C Ran Red Light.	0	0	1	2	0	0	0	3
D Ran Stop Sign.	0	0	0	0	0	0	0	0
E Invalid Vehicle Registration	0	3	0	0	0	0	0	3
F Invalid Motor Vehicle Inspect	0	0	0	0	0	0	0	0
G No Seat Belt	0	0	0	0	0	0	0	0
H No Insurance.	0	2	1	0	0	0	0	3
I No Driver's License	0	1	2	0	0	0	0	3
J Defective Equipment	0	0	1	0	0	0	0	1
K Other Violation	0	0	4	0	0	0	0	4
L Written Warnings	0	0	0	0	0	0	0	0
M Verbal Warning	0	5	6	0	8	0	0	19
N Citation	0	6	9	2	0	0	0	17
O Total Violations	0	11	15	2	8	0	0	36

H1. Traffic Enforcement Percentages:

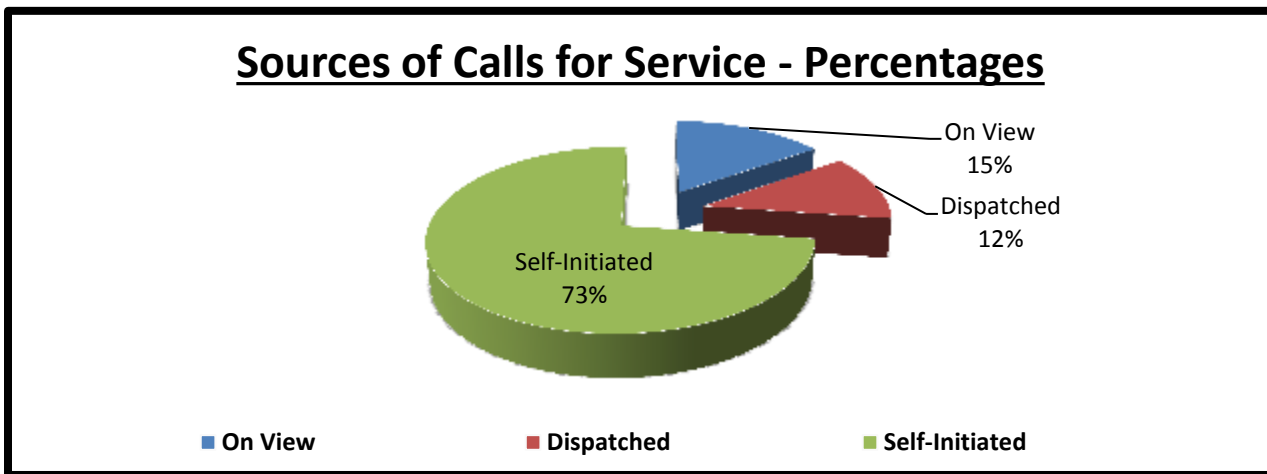


I. Sources of Calls for Service Monthly Total:

1101

*	Sources of Calls for Service	S03	S14	S24	S27	S34	V10	V11	TOT
A	On View	1	0	0	4	137	0	26	168
B	Dispatched	1	28	24	31	7	5	36	132
C	Self-Initiated	12	161	243	179	74	60	72	801
D	<i>Totals</i>	14	189	267	214	218	65	134	1101

II. Sources of Calls for Service Percentages:



J. Overtime Monthly Total:

000

*	Overtime Hours	S03	S14	S24	S27	S34	V10	V11	TOT
A	<i>Totals</i>	0	0	0	0	0	0	0	0

K. Free Reserve Personnel Time Utilized in Contract Monthly Total:

016

*	Free Reserve Personnel Time	S03	S14	S24	S27	S34	V10	V11	TOT
A	<i>Totals</i>	0	0	0	16	0	0	0	16

L. Mileage Monthly Total:

3654

*	Mileage	S03	S14	S24	S27	S34	V10	V11	TOT
A	Totals	N/A	947	722	665	658	241	421	3654

M. Patrol Alert Submission Report:

*	Received				Subject
05x	Date	Time	Code	Location	Extra patrol requested at the location to deter any criminal activity due to increase homeless activity.
A.	Aug 03	1146 hours	MTPA – ID162	2303 Louisiana	

*	Received				Subject
26x	Date	Time	Code	Location	Extra patrol requested at the location to deter any criminal activity due to increase robberies and burglaries of motor vehicles.
A.	Aug 05	1216 hours	MTPA – ID168	127 Oak Place	

*	Received				Subject
03x	Date	Time	Code	Location	Extra patrol requested at the location to deter any criminal activity and loitering in the area.
A.	Aug 10	1035 hours	MTPA – 146	2225 Louisiana	

*	Received				Subject
06x	Date	Time	Code	Location	Extra patrol requested at the location to deter any criminal activity and loitering in the area.
A.	Aug 17	1035 hours	MTPA – ID175	2808 Caroline	

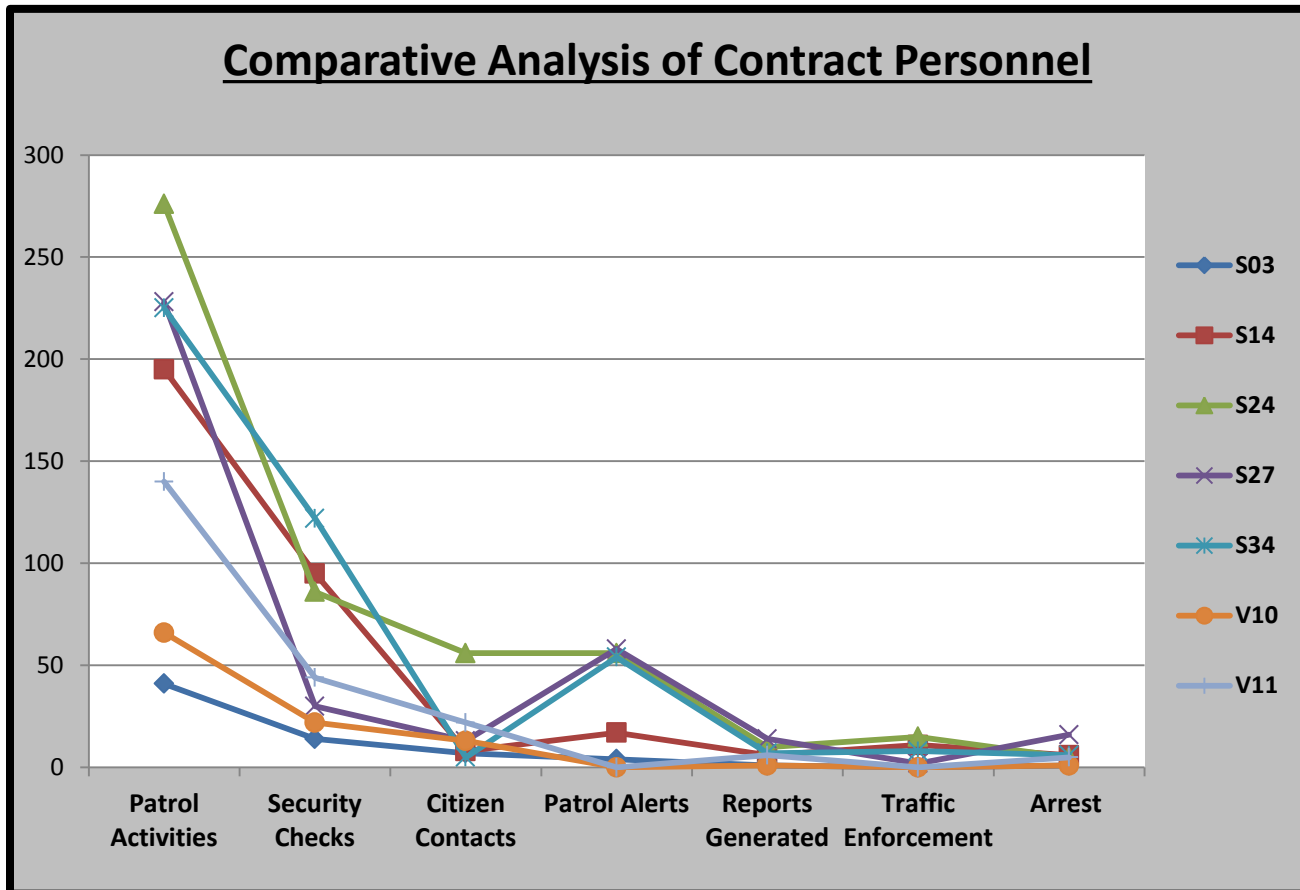
*	Received				Subject
06x	Date	Time	Code	Location	Extra patrol requested at the location to deter any criminal activity due to increase homeless activity.
A.	Aug 17	1035 hours	MTPA – ID176	2808 Caroline	

*	Received				Subject
09x	Date	Time	Code	Location	Extra patrol requested at the location to deter any criminal activity and loitering in the area.
A.	Aug 17	1050 hours	MTPA – ID177	1215 Dennis	

*	Received				Subject
06x	Date	Time	Code	Location	Extra patrol requested at the location to deter any criminal activity and loitering in the area.
A.	Aug 21	0846 hours	MTPA – ID183	2917 Austin	

*	Received				Subject
01x	Date	Time	Code	Location	Extra patrol requested at the location to deter any criminal activity and loitering in the area.
A.	Aug 22	1516 hours	MTPA – ID184	1404 Mcihenny	

N. Comparative Analysis of Assigned Personnel:



P. Hotspot Report:

See Appendix A1 for Hotspot Report:

Please note: 87s03 = Sgt. O. Haynes, 87s14 = Deputy B. Thomas/Deputy C. Manzanare, 87s24 = Deputy M. Rodriguez, 87s27 = Deputy K. Jordan, 87s34 = Deputy U. Ferretis, 87v10 = Deputy T. Roe and 87v11 = Deputy J. Maldonado. N/A under Mileage refers to the assigned marked take home unit provide to Sgt. Haynes.

Lieutenant Holland D. Jones

Lieutenant Holland D. Jones, *BS, MA, JD.*

Toll Road Division Supervisor & Departmental Training Coordinator

Harris County Constable's Office of Precinct "7"

713-643-6602 OR 832-892-7893