



MAY WALKER, CONSTABLE
PRECINCT SEVEN
HARRIS COUNTY, TEXAS

MAIN OFFICE
5300 Griggs Road
Houston, Texas 77021
PHONE (713) 643-6602
FAX (713) 643-3401

Date: 03/01/2016

From: Lieutenant Holland D. Jones, *BS, MA, JD*.
Toll Road Division Supervisor & Departmental Training Coordinator
Harris County Constable's Office of Precinct "7"

To: G.S.E.M.D. Management District
Public Safety Committee & G.S.E.M.D. Board of Directors

Subject: February G.S.E.M.D. Monthly Report
Enclosure: **Neighborhood Contract Performance Report**
Distribution: Public Safety Committee & G.S.E.M.D. Board of Directors

The purpose of this "**Contract Performance Report**" is to provide the Board of Directors with a detailed report of the services provided by the Harris County Constable's Office of Precinct Seven for the **performance of month of February, 2016**. With regard to the specific contents of the report, there are 18 distinctive component parts of this report. These components are enumerated below:

- | | |
|--|---|
| 01. Patrol Activity Details | 10. Traffic Enforcement Report |
| 02. Patrol Activity Analytical Summary | 11. Trends & Percentages of Traffic |
| 03. Patrol Activity Percentages & Trends | 12. Citation & Warning Issuance Review |
| 04. Security Checks Report | 13. Call for Service Report (<i>C.F.S.</i>) |
| 05. Security Checks Percentages & Trends | 14. Trends & Percentages for <i>C.F.S.</i> |
| 06. Crisis Intervention Disposition Report | 15. Overtime Report (service at no Cost) |
| 07. Offense/Incident Generation Report | 16. Reserve Deputy Use (at no Cost) |
| 08. Criminal Arrest Types Report | 17. Incident Summarization |
| 09. Warrant Execution Report | 18. Hotspot Report Data Review |

Each component is calculated separately to achieve the category totals. A cursory analysis of the statistical data from this report should be demonstrative of the quality of performance of this agency in realizing the contractual obligations to achieve the overall goals and objectives of this Agency and the G.S.E.M.D.

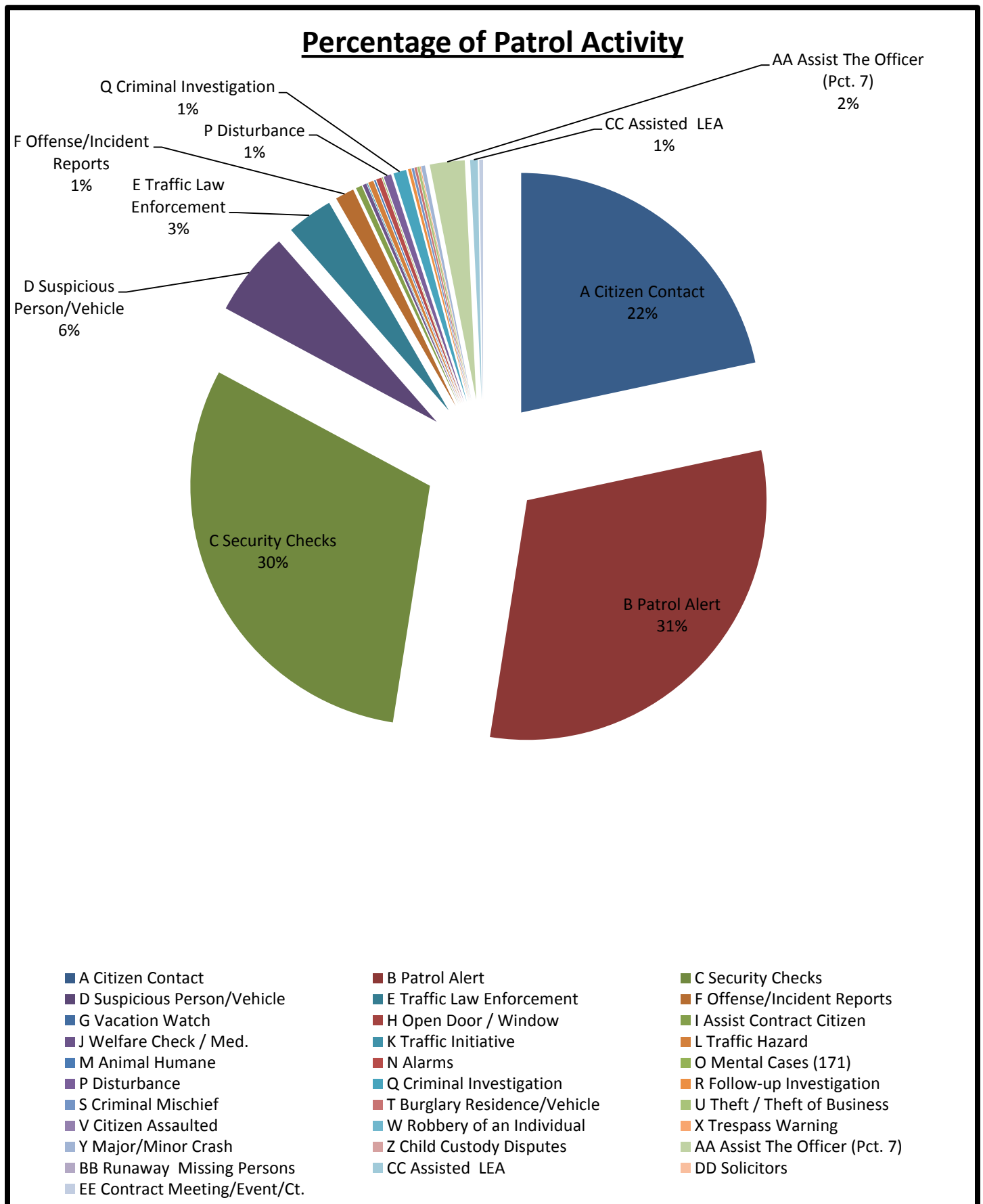
In addition, this report will encompass an incident summary category which will provide a brief synopsis of any significant incidents that have occurred during the evaluation month. The information accumulated will be utilized to identify spatial concentrations of significant incidents or offenses that required the generation of a police report by G.S.E.M.D. Law Enforcement Personnel.

A. Patrol Activity Monthly Total:

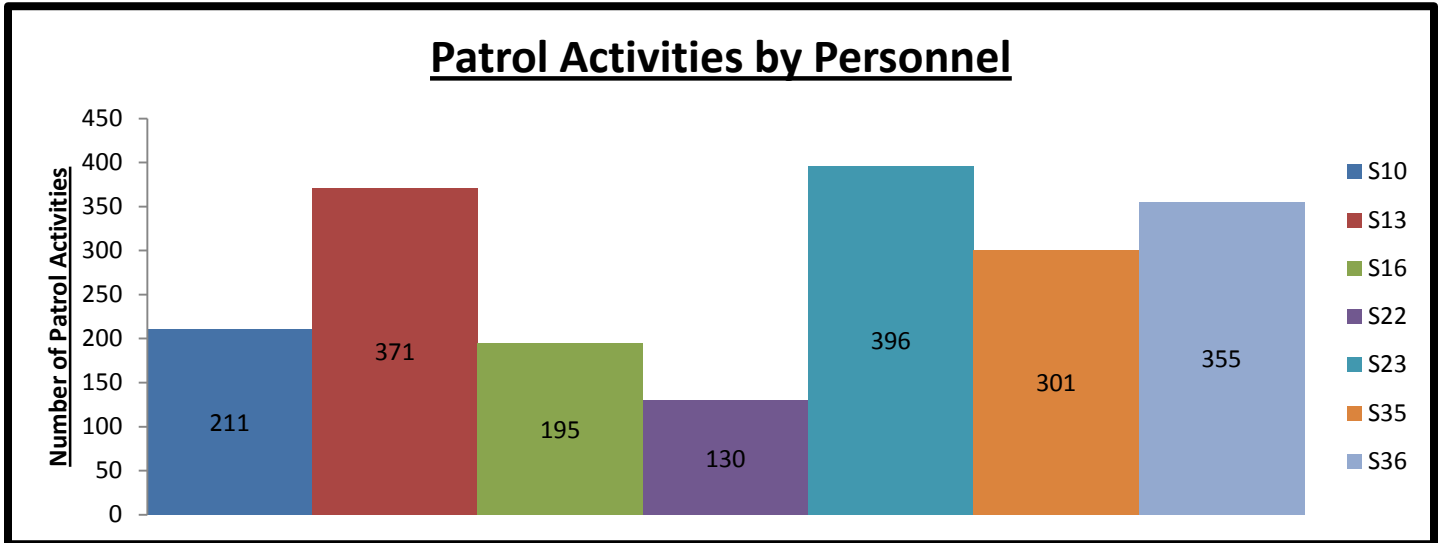
1959

*	<i>Patrol Activity Types</i>	S10	S13	S16	S22	S23	S35	S36	TOT
A	Citizen Contact	65	125	23	9	35	151	16	424
B	Patrol Alert	58	113	37	0	129	54	213	604
C	Security Checks	53	73	117	47	141	72	92	595
D	Suspicious Person/Vehicle	14	18	4	39	23	6	8	112
E	Traffic Law Enforcement	8	10	1	10	22	4	6	61
F	Offense/Incident Reports	0	5	2	9	5	3	1	25
G	Vacation Watch	0	0	0	0	0	0	0	0
H	Open Door / Window	0	0	0	0	0	0	0	0
I	Assist Contract Citizen	0	1	0	1	3	0	3	8
J	Welfare Check / Med.	1	2	0	1	1	0	0	5
K	Traffic Initiative	0	0	0	0	0	1	0	1
L	Traffic Hazard	1	2	1	1	2	0	0	7
M	Animal Humane	0	0	0	0	1	0	1	2
N	Alarms	0	0	0	1	2	1	3	7
O	Mental Cases (171)	0	1	0	0	0	0	0	1
P	Disturbance	0	1	2	6	1	0	0	10
Q	Criminal Investigation	0	7	0	1	8	0	1	17
R	Follow-up Investigation	0	1	0	0	0	3	0	4
S	Criminal Mischief	0	0	0	1	2	0	0	3
T	Burglary Residence/Vehicle	0	0	2	0	1	0	0	3
U	Theft / Theft of Business	0	1	0	0	1	1	0	3
V	Citizen Assaulted	0	0	0	0	0	0	0	0
W	Robbery of an Individual	0	0	0	0	0	0	0	0
X	Trespass Warning	0	0	0	0	0	1	0	1
Y	Major/Minor Crash	0	0	0	1	0	3	1	5
Z	Child Custody Disputes	0	0	0	0	0	0	0	0
AA	Assist The Officer (Pct. 7)	11	6	3	0	18	1	7	46
BB	Runaway Missing Persons	0	0	0	0	0	0	0	0
CC	Assisted LEA	0	5	0	2	0	0	3	10
DD	Solicitors	0	0	0	0	0	0	0	0
EE	Contract Meeting/Event/Ct.	0	0	3	1	1	0	0	5
*	<i>MONTH TOTALS</i>	211	371	195	130	396	301	355	1959

A1. Patrol Activity Percentage:



A2. Patrol Activity by G.S.E.M.D. Personnel:

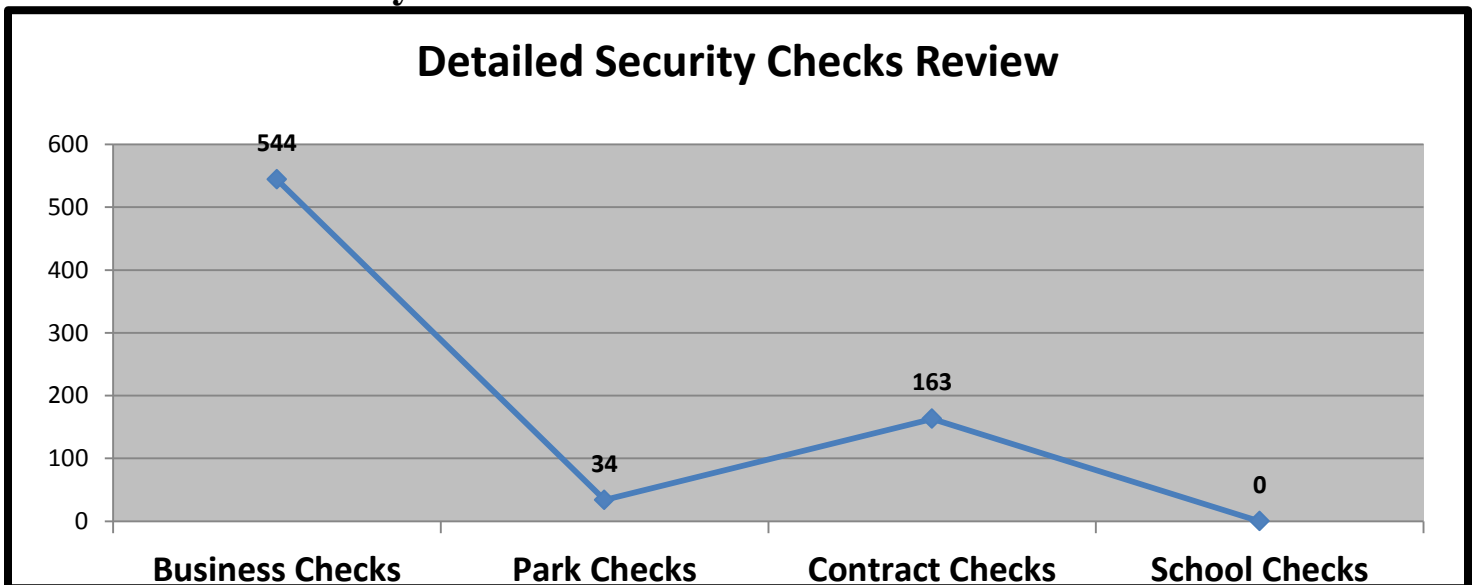


B. Security Checks Monthly Total:

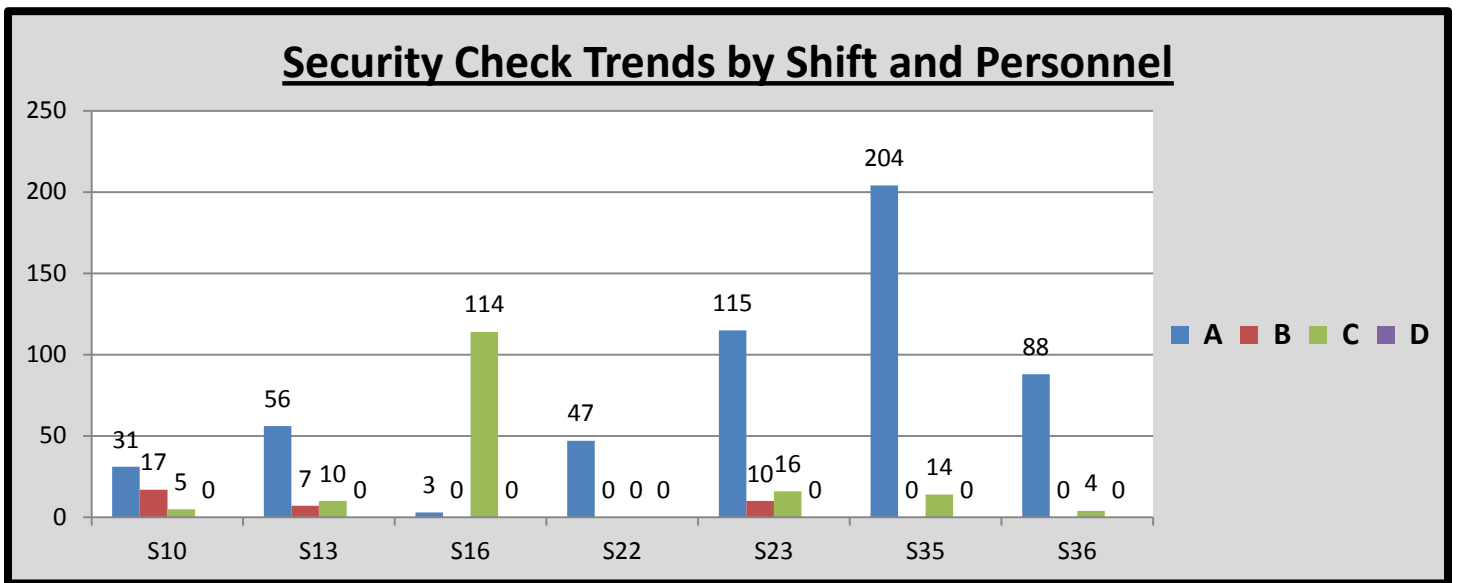
741

*	Security Checks	S10	S13	S16	S22	S23	S35	S36	TOT
A	Business Checks	31	56	3	47	115	204	88	544
B	Park Checks	17	7	0	0	10	0	0	34
C	Contract Checks	5	10	114	0	16	14	4	163
D	School Checks	0	0	0	0	0	0	0	0
E	Totals	53	73	117	47	141	218	92	741

B1. Detailed Security Checks Review:



B2. Security Check Trends:



C. CIT/MHO Dispositions Monthly Total:

002

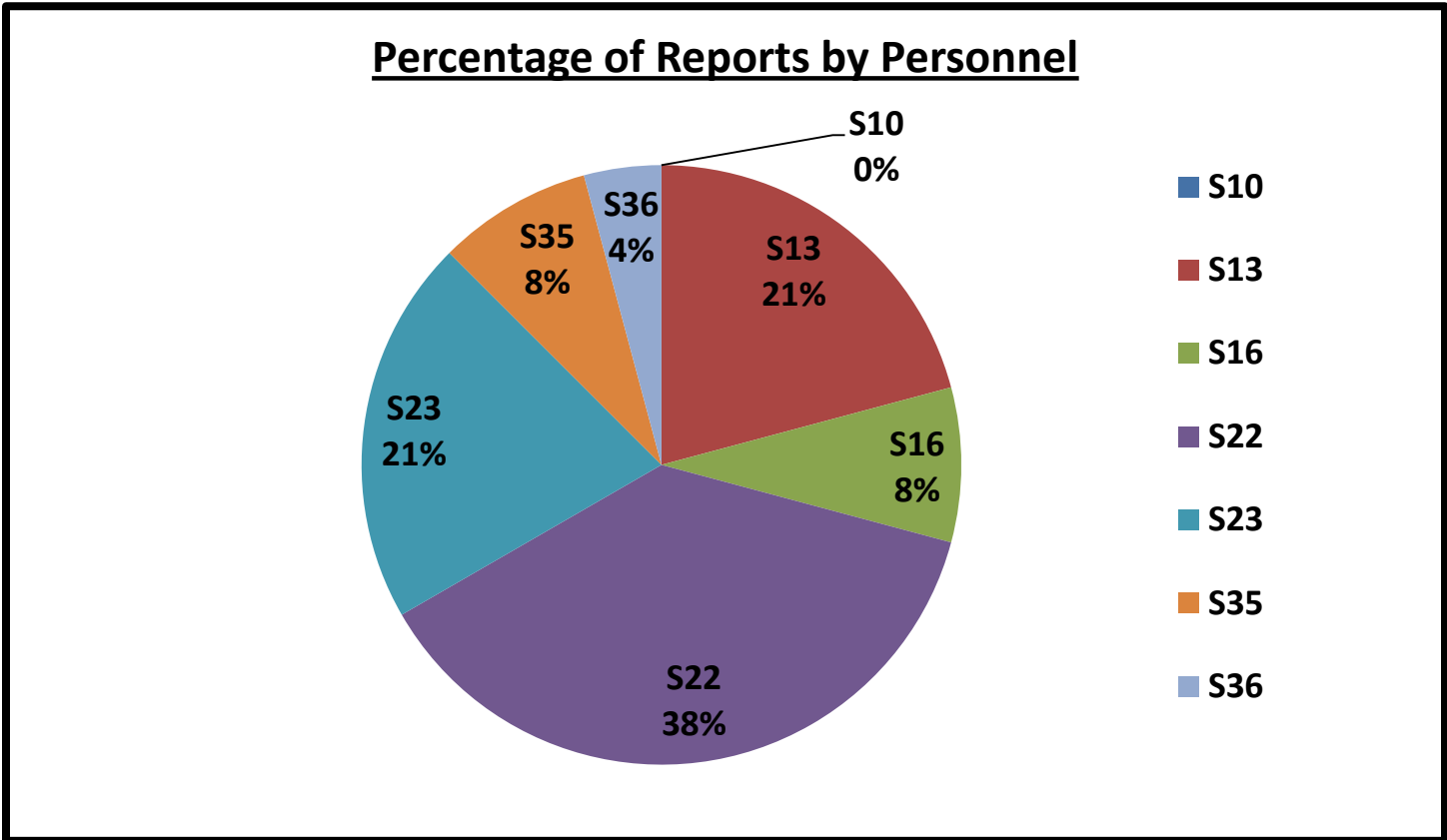
* C.I.T. Dispositions	S10	S13	S16	S22	S23	S35	S36	TOT
A CIT/MHO Outside Referral	0	0	0	0	0	0	0	0
B CIT/MHO Transport	0	0	0	0	0	0	0	0
C CIT/MHO CIT Contact	0	0	0	0	0	1	0	1
D CIT/MHO Arrest	0	1	0	0	0	0	0	1
E Totals	0	1	0	0	0	1	0	2

D. Offense/Incident Reports Monthly Total:

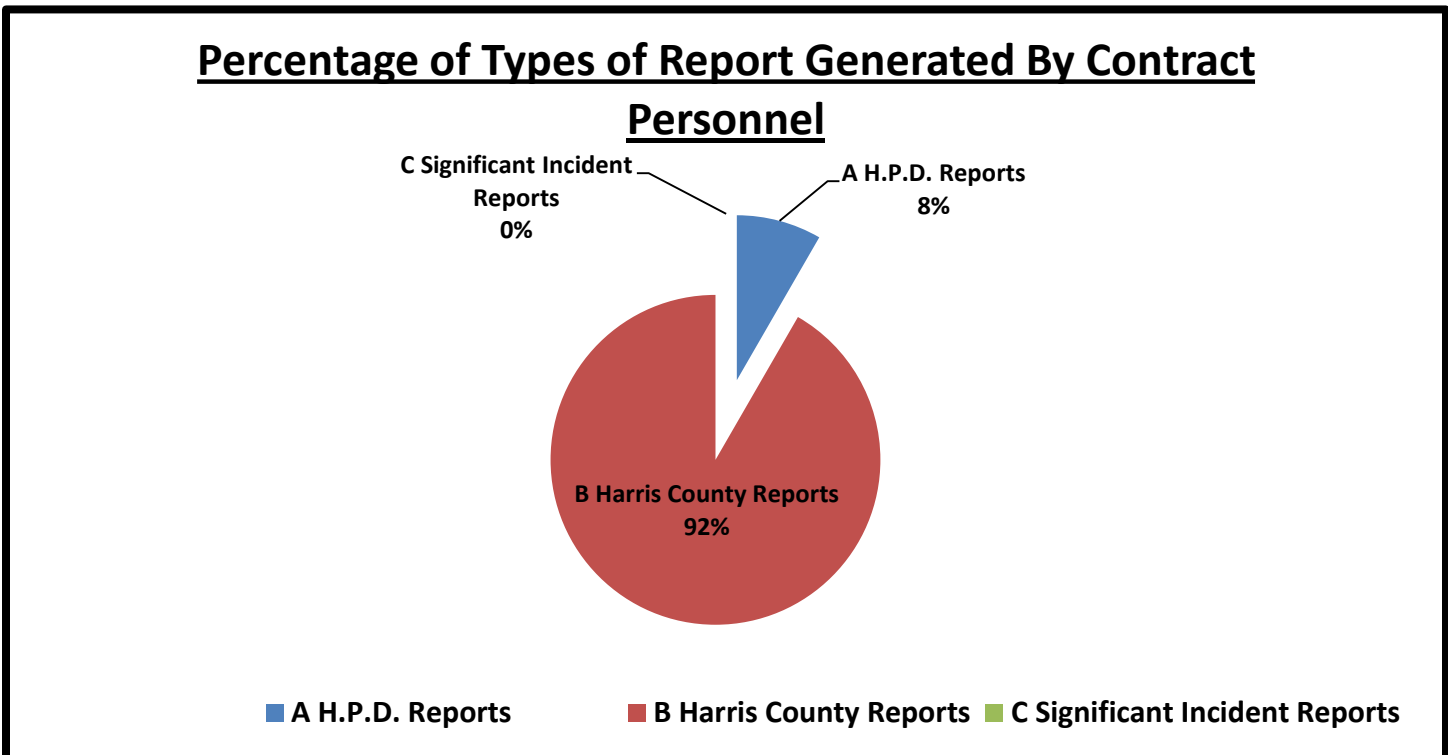
024

* Offense/Incident Reports	S10	S13	S16	S22	S23	S35	S36	TOT
A H.P.D. Reports	0	0	0	0	2	0	0	2
B Harris County Reports	0	5	2	9	3	2	1	22
C Significant Incident Reports	0	0	0	0	0	0	0	0
D Totals	0	5	2	9	5	2	1	24

D1. Report Generation Percentages:



D2. Percentages:

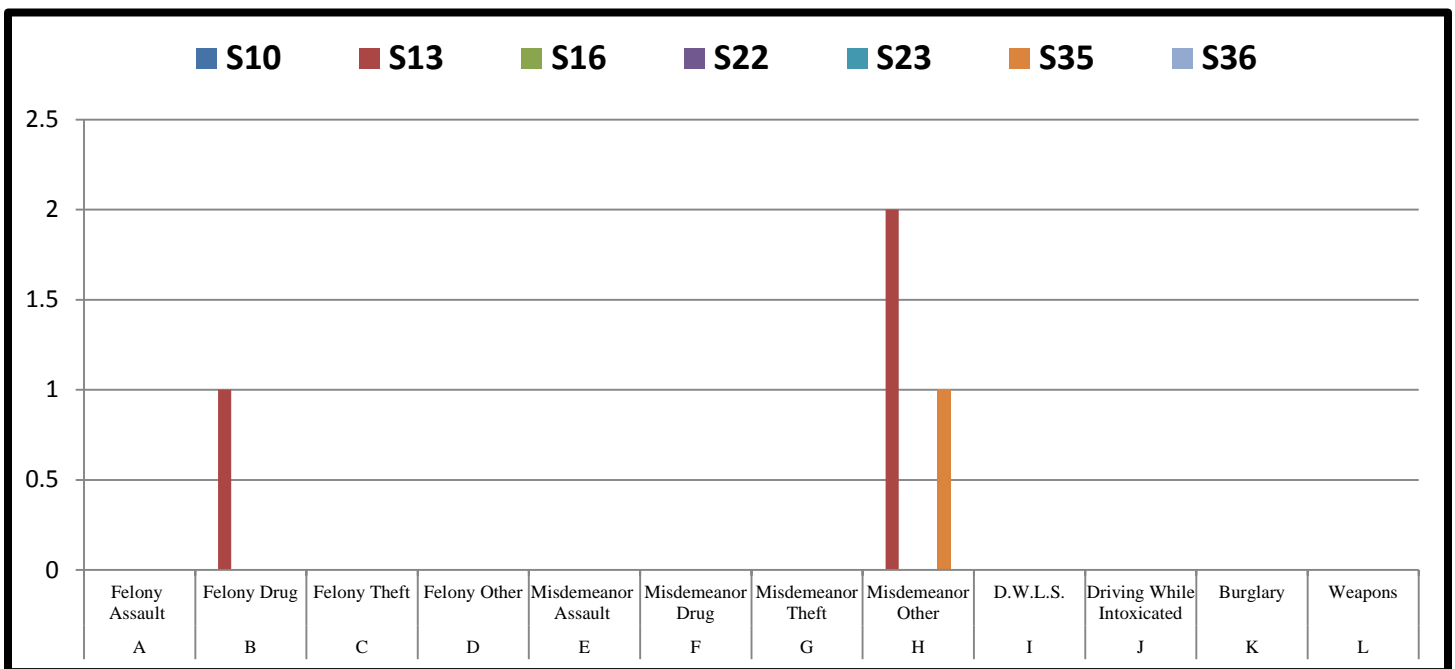


E. Types of Criminal Arrests Monthly Total:

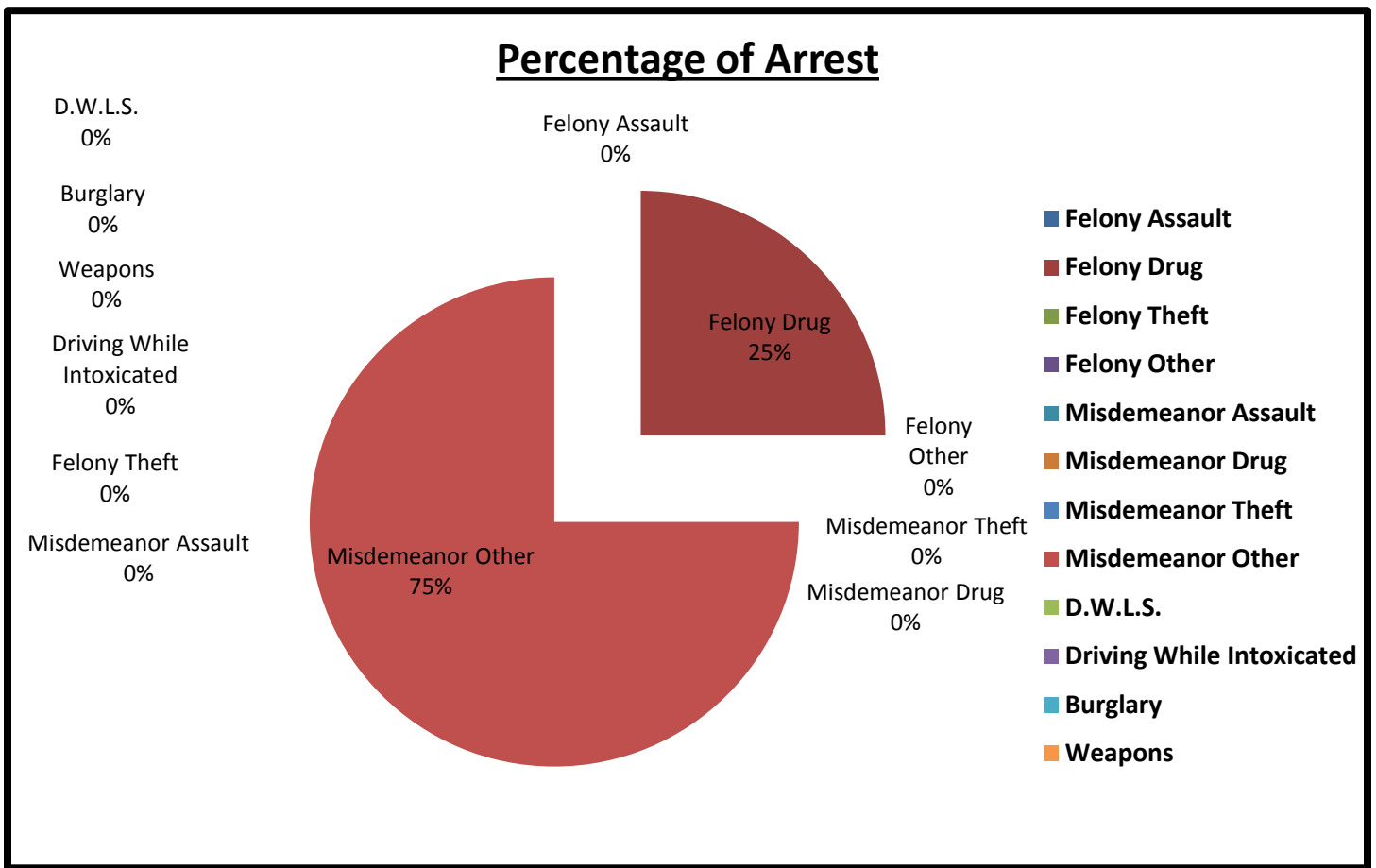
004

*	Types of Criminal Arrests	S10	S13	S16	S22	S23	S35	S36	TOT
A	Felony Assault	0	0	0	0	0	0	0	0
B	Felony Drug	0	1	0	0	0	0	0	1
C	Felony Theft	0	0	0	0	0	0	0	0
D	Felony Other	0	0	0	0	0	0	0	0
E	Misdemeanor Assault	0	0	0	0	0	0	0	0
F	Misdemeanor Drug	0	0	0	0	0	0	0	0
G	Misdemeanor Theft	0	0	0	0	0	0	0	0
H	Misdemeanor Other	0	2	0	0	0	1	0	3
I	D.W.L.S.	0	0	0	0	0	0	0	0
J	Driving While Intoxicated	0	0	0	0	0	0	0	0
K	Burglary	0	0	0	0	0	0	0	0
L	Weapons	0	0	0	0	0	0	0	0
M	<i>Totals</i>	0	3	0	0	0	1	0	4

E1. Types of Criminal Arrests Monthly Total:



E2. Percentage of Arrest:



F. Executed Warrant Monthly Total:

015

*	<i>Executed Warrants</i>	S10	S13	S16	S22	S23	S35	S36	TOT
A	Felony Warrants	0	0	2	2	0	0	0	4
B	Misdemeanor Warrants	0	1	0	10	0	0	0	11
C	<i>Totals</i>	0	1	2	12	0	0	0	15

G. Citations vs. Warnings Monthly Total:

080

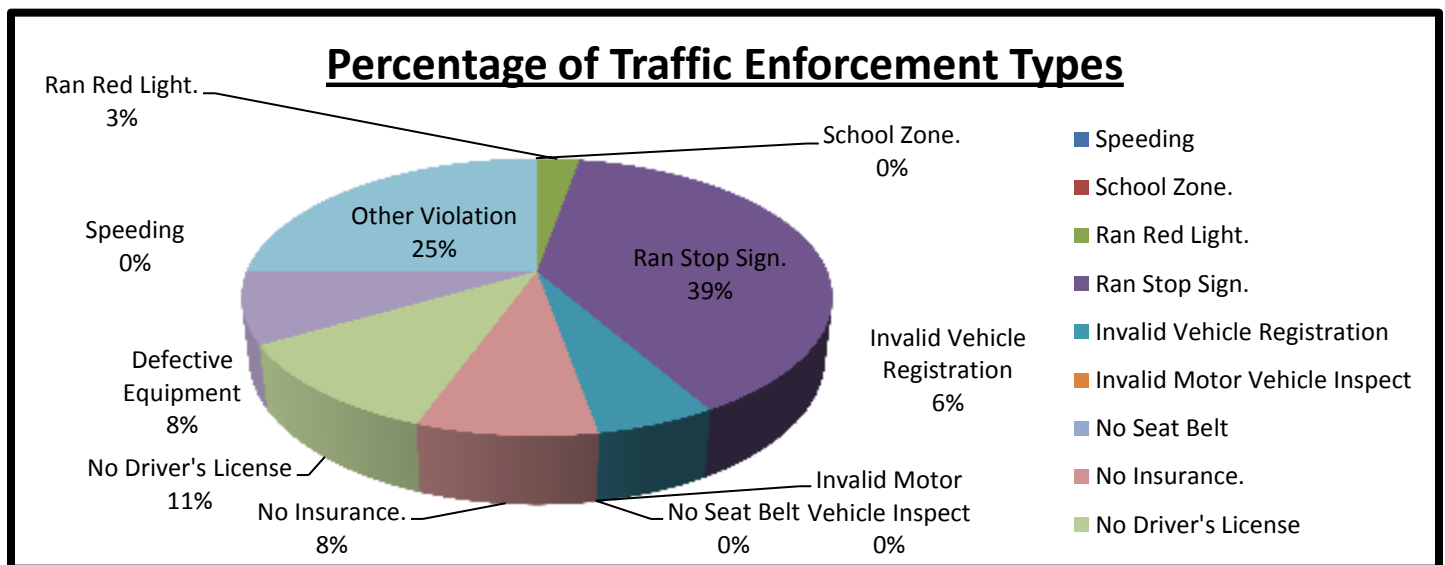
*	<i>Warnings vs. Citations</i>	S10	S13	S16	S22	S23	S35	S36	TOT
A	Written/Verbal Warnings	3	6	0	7	16	1	6	39
B	Citations	8	11	0	5	10	4	3	41
C	<i>Totals</i>	11	17	0	12	26	5	9	80

H. Traffic Enforcement Monthly Total:

068

*	Traffic Enforcement	S10	S13	S16	S22	S23	S35	S36	TOT
A	Speeding	0	0	0	0	0	0	0	0
B	School Zone.	0	0	0	0	0	0	0	0
C	Ran Red Light.	0	0	0	0	0	1	0	1
D	Ran Stop Sign.	2	8	0	0	4	0	0	14
E	Invalid Vehicle Registration	1	1	0	0	0	0	0	2
F	Invalid Motor Vehicle Inspect	0	0	0	0	0	0	0	0
G	No Seat Belt	0	0	0	0	0	0	0	0
H	No Insurance.	0	2	0	0	0	1	0	3
I	No Driver's License	2	0	0	0	1	1	0	4
J	Defective Equipment	0	0	0	0	0	0	3	3
K	Other Violation	3	0	0	0	5	1	0	9
L	Written Warnings	0	0	0	0	0	0	0	0
M	Verbal Warning	3	6	0	0	16	1	6	32
N	Citation	8	11	0	0	10	4	3	36
O	Total Violations	11	17	0	0	26	5	9	68

H1. Traffic Enforcement Percentages:

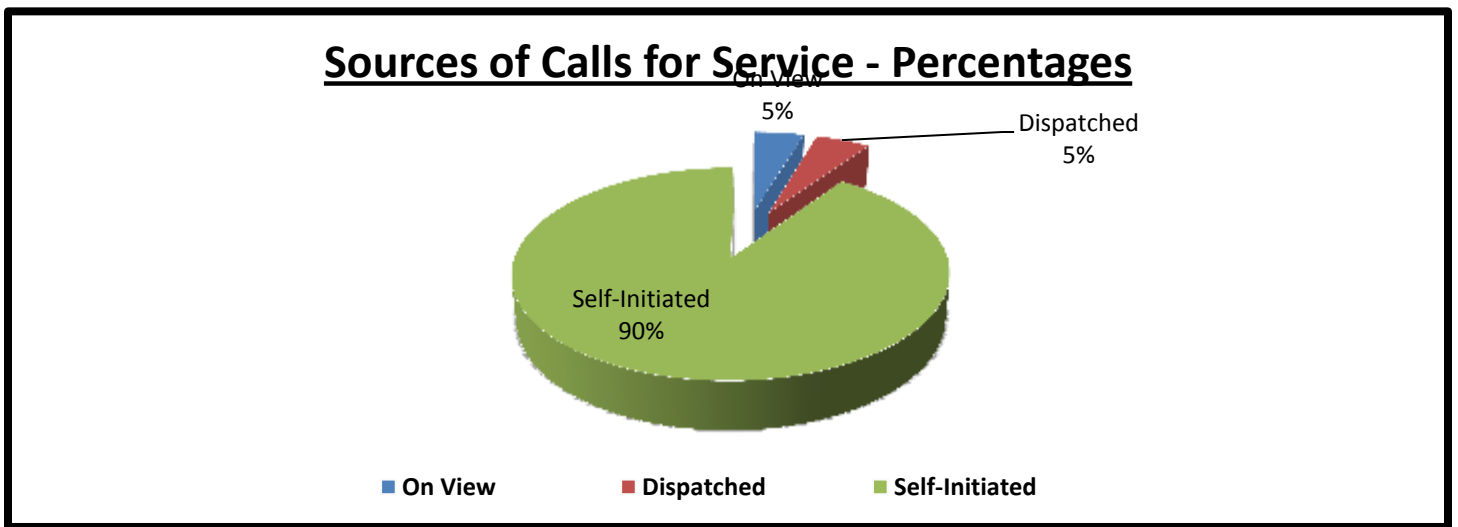


I. Sources of Calls for Service Monthly Total:

1940

*	Sources of Calls for Service	S10	S13	S16	S22	S23	S35	S36	TOT
A	On View	5	20	1	45	9	1	8	89
B	Dispatched	5	19	2	26	26	9	10	97
C	Self-Initiated	201	327	192	54	356	288	336	1754
D	Totals	211	366	195	125	391	298	354	1940

I. Sources of Calls for Service Percentages:



J. Overtime Monthly Total:

000

*	Overtime Hours	S10	S13	S16	S22	S23	S35	S36	TOT
A	Totals	0	0	0	0	0	0	0	0

K. Free Reserve Personnel Time Utilized in Contract Monthly Total:

000

*	Free Reserve Personnel Time	S10	S13	S16	S22	S23	S35	S36	TOT
A	Totals	0	0	0	0	0	0	0	0

L. Mileage Monthly Total:

4020

*	Mileage	S10	S13	S16	S22	S23	S35	S36	TOT
A	Totals	317	623	210	889	731	522	728	4020

M. Patrol Alert Submission Report:

*	Received				Subject
36x	Date	Time	Code	Location	Extra patrol requested at the location to deter any criminal activity and burglaries.
A.	Feb 04	2001 hours	GSEPA - 039	Blythewood at Laural	

*	Received				Subject
47x	Date	Time	Code	Location	Burglaries are occurring near area – extra patrol requested.
A.	Feb 04	2005 hours	GSEPA - 40	3138 S Mac Gregory Way	

*	Received				Subject
52x	Date	Time	Code	Location	Extra patrol requested at the location to deter any criminal activity and loitering.
A.	Feb 04	2007 hours	GSEPA - 041	Allegheny/Dixie	

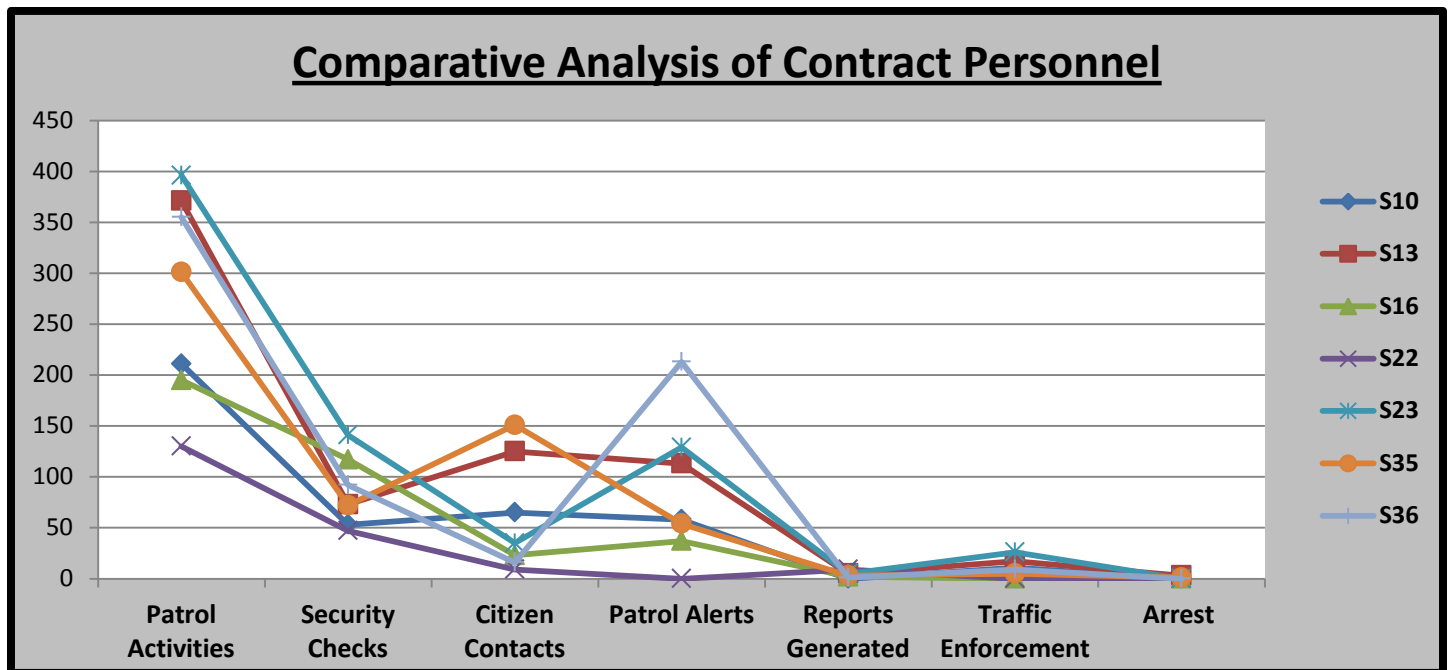
*	Received				Subject
29x	Date	Time	Code	Location	Burglaries are occurring near area – extra patrol requested.
A.	Feb 09	1417 hours	GSEPA - 043	6008 Del Rio St	

*	Received				Subject
19x	Date	Time	Code	Location	Robberies are occurring near area – extra patrol requested.
A.	Feb 16	1436 hours	GSEPA - 052	3560 Dixie Dr	

*	Received				Subject
19x	Date	Time	Code	Location	Burglaries are occurring near area – extra patrol requested.
A.	Feb 17	1429 hours	GSEPA - 056	3717 Charleston	

*	Received				Subject
2x	Date	Time	Code	Location	Extra patrol requested at the location to deter any criminal activity and loitering.
A.	Feb 24	2302 hours	GSEPA - 073	3557 Rebecca	

N. Comparative Analysis of Assigned Personnel:



O. Incident Summaries:

01.	FEBRUARY 2, 2016	1345 HOURS	FELONY ARREST	DEPUTY P. MARSHALL
	DAYSHIFT:	SCOTT/N MGREG WY	GSEMD	"F"
		HC:	16-18062	
<p>On February 2, 2016 at approximately 13:45 hours, Deputy P. Marshall unit (87S16) was performing routine patrol and law enforcement services when I observed a van run the red light. Upon arrival, I then met with the subject and performed a computer check with the information provided by the subject. It was then found that the subject had 2 outstanding felony warrants out of the Harris County Sheriff's office. I then placed the subject into custody and transported them to Harris County Jail without incident. A case report was generated. The patrol activity type is "PAT=D".</p>				

02.	FEBRUARY 03 2016	0355 HOURS	THEFT OF BUSINESS	DEPUTY C. DARDEN
	NIGHTSHIFT:	3800 OST	GSEMD	"M"
		HC:	16-19638	
<p>On February 05, 2016, at approximately 0355 hours, Deputy C. Darden (riding unit 87S35) was performing routine patrol and law enforcement services when I was dispatched to a Theft of Business Upon arrival, I made contact with the Complainant who was the night shift manager. Made contact with the subject who fled on foot subject was taken into custody and was transported to the Harris County Jail without incident The patrol activity type is "PAT=U".</p>				

03.	FEBRUARY 3, 2016	1155 HOURS	ABANDONED VEHICLE	DEPUTY A. SANTOS		
	DAYSHIFT:	2900 SOUTHMORE BL.	GSEMD	"N/A"	HC:	16-18575
<p>On February 03, 2016, at approximately 1155 hours, Deputy A. Santos (riding unit 87S13) was performing routine patrol and law enforcement services when I was dispatched to a report of an abandoned vehicle parked in the backyard of a residence. Upon arrival, I met with reportee who stated that an unknown vehicle is parked in the backyard of his property. I then retrieved information from the vehicle and it showed that it was not stolen via TCIC/NCIC. I then requested a wrecker to remove the vehicle. The vehicle was removed from the property without incident and was transported to a storage lot listed in the report. I then obtained contact information from the reportee and a case report was generated. The patrol activity type is "PAT=D".</p>						

04.	FEBRUARY 12, 2016	1925HOURS	SUSPICIOUS PERSONS	DEPUTY M. BROWN		
	EVENINGSHIFT:	2100SOUTHMOREBL	GSEMD	"F"	HC:	16-24260
<p>On February 12, 2016 a Friday, at approximately 1925 hours, while on patrol in the GSEMD Contract, I Deputy M. Brown unit #87S22 with the Harris County Constables Department of Precinct 7 I observed two males loitering and drinking an alcoholic beverage right outside the door of the gas station. I made contact with the subject and found that one of the subjects had warrants and the other was in possession of drugs. Both subjects were arrested and charged. The patrol activity type is "PAT= D"</p>						

05.	FEBRUARY 13, 2016	1500 HOURS	BURGLARY	DEPUTY J. COUSIN		
	EVENINGSHIFT:	6600 TIERWESTER	GSEMD	"M"	HPD:	193314-16
<p>On February 13, 2016 a Saturday at approximately 15:00 hours while on patrol in the GSEMD Contract I Deputy J. Cousin unit 87S23 with The Harris County Constable Department of Precinct 7 was dispatched to a Burglary of a Habitation call for service that had already occurred. The victim of the burglary was able to retrieve the stolen property. The alleged suspect was a family member that was not on the scene. I notified Harris County DA's Office of the situation and no criminal charges were accepted against the alleged suspect. The patrol activity type is "PAT= T"</p>						

06.	FEBRUARY 14, 2016	0150 HOURS	MAJOR/MINOR CRASH	DEPUTY C. DARDEN		
	NIGHTSHIFT:	SPUR 5/OST	GSEMD	"N/A"	HC:	16-24887
<p>On February14, 2016, at approximately 0150 hours, Deputy C. Darden (riding unit 87S35) was performing routine patrol and law enforcement services when I was dispatched to a major/ minor crash. Upon arrival I met with subject that stated he lost control of his vehicle he did no see the median in the road. A case report was generated. The patrol activity type is "PAT=Y".</p>						

07.	FEBRUARY 14, 2016	1300 HOURS	POM/POSS OF FIREARM	DEPUTY A. SANTOS		
	DAYSHIFT:	3400 WENTWORTH	GSEMD	"F"	HC:	16-25063
<p>On February 14, 2016, at approximately 1300 hours, Deputy A. Santos (riding unit 87S13) was performing routine patrol and law enforcement services when I conducted a traffic stop for failure to make a complete stop at a stop sign at Wentworth St. and Burkett St. Upon stopping the vehicle it was found that the driver was in possession of marijuana and felony possession of a firearm by a felon. The driver was subsequently charged with POM/POF and was transported to the Harris County Jail. Vehicle was also towed. A case report was generated for the arrest and property was placed into secure facilities. The patrol activity type is "PAT=E".</p>						

08.	FEBRUARY 15, 2016	1600 HOURS	WARRANT ARREST		DEPUTY M. BROWN	
	EVENINGSHIFT:	5800 ARDMORE ST	GSEMD	"M"	HC:	16-25785
<p>On February 15, 2016 a Monday, at approximately 1600 hours, while on patrol in the GSEMD Contract, I Deputy M. Brown unit #87S22 with the Harris County Constables Department of Precinct 7, observed a vehicle make multiple traffic violation. A traffic stop was conducted on the vehicle and the driver was found to have multiple sexual assault warrants out for his arrest. The driver was arrested and booked into the Harris County Jail.</p> <p>The patrol activity type is "PAT=K"</p>						

09.	FEBRUARY 15,2016	2100 HOURS	CRIMINAL MISCHIEF		DEPUTY J. COUSIN	
	EVENINGSHIFT:	3600 FLORINDA	GSEMD	"M"	HPD:	203308-16
<p>On February 15, 2016 a Monday at approximately 21:00 hours, while on patrol in the GSEMD Contract, I Deputy J. Cousin unit 87S23 and Deputy M. Brown unit 87S22 with the Harris County Constable Department of Precinct 7 was dispatched to a criminal mischief call of service. Upon arrival we were met by a b/f who advised that she observed her daughter slash her tires and depart. An HPD report was made of the incident for follow up.</p> <p>The patrol activity type is "PAT= S"</p>						

10.	FEBRUARY 17,2016	0930 HOURS	WARRANT ARREST		DEPUTY A. SANTOS	
	DAYSHIFT:	4000 ELGIN ST.	GSEMD	"M"	HC:	16-26683
<p>On February 17, 2016, at approximately 0930 hours, Deputy A. Santos (riding unit 87S13) was performing routine patrol and law enforcement services when I was dispatched to a suspicious person refusing to leave a business. Upon arrival I met with reportee that stated the subject was sleeping on tables and refusing to leave after several requests. I then made contact with subject and performed a computer check with the information provided by the subject. It was then found that the subject had an outstanding misdemeanor warrant out of the Harris County Sheriff's Office. I then placed the subject into custody and transported them to the Harris County Jail without incident. A case report was generated. The patrol activity type is "PAT=D".</p>						

11.	FEBRUARY 17,2016	1255 HOURS	BURGLARY / VEHICLE		DEPUTY P. MARSHALL	
	DAYSHIFT:	3200 CHARLESTON	GSEMD	"N/A"	HC:	16-26783
<p>On February 17, 2016, at approximately 1255 hours, Deputy P. Marshall (riding unit 87S16) was performing routine patrol and law enforcement services when I Deputy Marshall was flagged down to a burglary of a motor vehicle. The complainant stated that she parked her vehicle outside her mother residence around 12:00. The complainant advised she returned to her vehicle at 12:20 at that time she found her rear window broken. Deputy Marshall then met with the complainant to gather all information needed to complete this report. A case report was generated. The patrol activity type is "PAT=T".</p>						

12.	FEBRUARY 20, 2016	1640 HOURS	SUSPICIOUS PERSON		DEPUTY M. BROWN	
	EVENINGSHIFT:	2300 SOUTHMORE BL	GSEMD	"M"	HC:	16-28714
<p>On February 20, 2016 a Saturday, at approximately 1640 hours, while on patrol in the GSEMD Contract, I Deputy M. Brown unit #87S22 with the Harris County Constables Department of Precinct 7 responded to the location in regards to a known suspect was criminally trespassing at the location. That subject was arrested and charged.</p> <p>The patrol activity type is "PAT-D"</p>						

13.	FEBRUARY 21, 2016	1655 HOURS	THEFT	DEPUTY M. BROWN
	EVENINGSHIFT:	2300 SOUTHMORE BL	GSEMD	"M"
			HC:	16-29222
<p>On February 21, 2016 a Sunday, at approximately 1655 hours, while on patrol in the GSEMD Contract, I Deputy M. Brown unit #87S22 with the Harris County Constables Department of Precinct 7 responded to the listed address in regards to an unknown female suspect arrived at the location demanding a refund over some ice she bought earlier in the day. When the manager refused the suspect got upset, grabbed a soda and fled the scene without paying. The patrol activity type is "PAT=U".</p>				

14.	FEBRUARY 22, 2016	0815 HOURS	ABANDONED VEHICLE	DEPUTY A. SANTOS
	DAYSHIFT:	3400 DIXIE DR.	GSEMD	"N/A"
			HC:	16-29512
<p>On February 22, 2016, at approximately 0815 hours, Deputy A. Santos (riding unit 87S13) performing routine patrol and law enforcement services when I was flagged down by an unidentified individual stating that a vehicle had been abandoned and was involved in an accident at a different location. Upon observing the vehicle, I found some damage to the left rear quarter panel and had a flat tire. I then requested a wrecker via police dispatch. The vehicle was removed from the private lot without incident. I then made contact with HPD officers that advised that the vehicle removed was involved in the FSGI that occurred on S Macgregor. I then provided the abandoned vehicle information for their report. A case report was generated. The patrol activity type is "PAT=D".</p>				

15.	FEBRUARY 22, 2016	1615 HOURS	WARRANT ARREST	DEPUTY M. BROWN
	EVENINGSHIFT:	3355 DIXIE DR	GSEMD	"M"
			HC:	16-29805
<p>On February 22, 2016 a Monday, at approximately 1615 hours, while on patrol in the GSEMD Contract, I Deputy M. Brown unit #87S22 with the Harris County Constables Department of Precinct 7 observed a known subject loitering. The subject had warrants out for his arrest. He was arrested and the warrants were cleared. The patrol activity type is "PATD= D".</p>				

16.	FEBRUARY 22, 2016	1700 HOURS	GAMBLING	DEPUTY J. COUSIN
	EVENINGSHIFT:	3700 LEHALL	GSEMD	"M"
			HC:	16-29871
<p>On February 22, 2016 a Monday at approximately 17:00 Hours while on patrol in the GSEMD Contract, I Deputy J. Cousin unit 87S23 and Deputy B. Thomas unit 87S10 with the Harris County Constable Department of Precinct 7 was dispatched to a gambling call for service. Upon arrival six black males were engaging in gambling activities. with cash and dice. All individuals involved were issued a class C misdemeanor citation for gambling per TX Penal Code 47.02. The patrol activity type is "PAT- Q"</p>				

17.	FEBRUARY 23, 2016	1800 HOURS	CRIMINAL TRESPASS	DEPUTY J. COUSIN
	EVENINGSHIFT:	3400 CHARLESTON	GSEMD	"M"
			HC:	16-30480
<p>On February 23, 2016 a Tuesday at approximately 18:00 while on patrol in the GSEMD contract I Deputy J. Cousin unit 87S23 with the Harris County Constable Department of Precinct 7 was flagged down by a b/m in regards to someone trespassing on his property. The trespasser was someone who lived on his block trying to befriend his dog. The trespasser admitted to trespassing and apologized to the owner of the property. The trespasser was issued a verbal criminal trespass warning. The patrol activity type is "PAT= X".</p>				

18.	FEBRUARY 24, 2016	0840 HOURS	MENTAL ILLNESS		DEPUTY A. SANTOS	
	DAYSHIFT:	3800 OST	GSEMD	"N/A"	HC:	16-30730
<p>On February 24, 2015, at approximately 0840 hours, Deputy A. Santos (riding unit 87S13) was performing routine patrol and law enforcement services when I was dispatched to a suspicious person call. Upon arrival, I observed an individual appearing to be in a mental crisis. The individual appeared to be in danger to themselves and others. The individual was detained and transported to the Neuro Psychiatric Center and was placed on an emergency detention order. A case report was generated. The patrol activity type is "PAT=O".</p>						
19.	FEBRUARY 25, 2016	2040 HOURS	CRIMINAL TRESPASS		DEPUTY M. BROWN	
	EVENINGSHIFT:	2300 SOUTHMORE BL	GSEMD	"M"	HC:	16-31649
<p>On February 25, 2016 a Thursday, at approximately 2040 hours, while on patrol in the GSEMD Contract, I Deputy M. Brown unit #87S22 with the Harris County Constables Department of Precinct 7 responded to the stated location in regards to a known suspect criminally trespassing at the stated location. That subject was arrested and charged. The patrol activity type is "PAT=Q".</p>						
20.	FEBRUARY 27, 2016	0640 HOURS	MAJOR/MINOR CRASH		DEPUTY: M. FULTON	
	NIGHTSHIFT:	OST @ PEERLESS	GSEMD	"M"	HC:	16-32349
<p>On February 27 2016, a Saturday at approximately 0640 hours, while on patrol in the GSEMD Contract, I Deputy M. Fulton unit 87S36 with the Harris County Constables Office of Precinct 7 heard a crash take place and I notified dispatch that I was enroute to the location of crash. I discovered a two vehicle crash at the intersection of OST & Peerless. Once on the scene, I conducted a crash investigation and the operator whom was at fault was issued a citation. The patrol activity type is "PAT= E"</p>						
21.	FEBRUARY 27, 2016	1600 HOURS	FOUND PROPERTY		DEPUTY J. COUSIN	
	EVENINGSHIFT:	5200 GRIGGS	GSEMD	"N/A"	HC:	16-32574
<p>On February 27, 2016 a Saturday at approximately 16:00 while on patrol in the GSEMD contract, I Deputy J. Cousin unit 87S23 with the Harris County Constables Department of Precinct 7 was dispatched to Pct. 7 headquarters to meet with a citizen who wanted to turn in items that he found while cleaning a church gutter. One of the items turned in may be linked to HC Case# 16-32033 which is a burglary of a residence that occurred on February 26, 2016. The case was conducted by Deputy Burt Jeukeng Unit# 84853 of Harris County Constables Department of Precinct 4. All items turned in to Deputy J. Cousin was placed into Pct. 7 Evidence. The patrol activity type is "PAT= T".</p>						
22.	FEBRUARY 29, 2016	1720HOURS	INFORMATION CALL		DEPUTY M. BROWN	
	EVENINGSHIFT:	3800 OST	GSEMD	"M"	HC:	16-33606
<p>On February 29, 2016 a Monday, at approximately 1720 hours, while on patrol in the GSEMD Contract, I Deputy M. Brown unit #87S22 with the Harris County Constables Department of Precinct 7 responded to the stated location in regards to an unknown suspect attempted to conceal an item without paying. The manager observed the subject and demanded the item. The suspect gave the item to the manager and fled the store. The patrol activity type is "PAT= Q"</p>						

23.	FEBRUARY 29, 2016	1820HOURS	WARRANT ARREST	DEPUTY M. BROWN
	EVENINGSHIFT:	3800 OST	GSEMD	"M"
			HC:	16-33651
<p>On February 29, 2016 a Monday, at approximately 1820 hours, while on patrol in the GSEMD Contract, I Deputy M. Brown unit #87S22 with the Harris County Constables Department of Precinct 7 was approached by a known subject that had multiple warrants out for her arrest. The subject was arrested and the warrants were cleared. The patrol activity type is "PAT=D".</p>				

P. Hotspot Report:

See Appendix A1 for Hotspot Report:

Please note: 87s10 = Deputy B. Thomas, 87s13 = Deputy A. Santos, 87s16 = Deputy P. Marshall, 87s22 = Deputy M. Brown, 87s23 = Deputy J. Cousin, 87s35 = Deputy C. Darden and 87s36 = Deputy M. Fulton.

Lieutenant Holland D. Jones

Lieutenant Holland D. Jones, *BS, MA, JD.*

Toll Road Division Supervisor & Departmental Training Coordinator

Harris County Constable's Office of Precinct "7"

713-643-6602 OR 832-892-7893